

Srgap1 antibody - middle region

Rabbit Polyclonal Antibody

Catalog # AI14121

Product Information

Application	WB
Primary Accession	Q91Z69
Other Accession	NM_001081037 , AAL27030
Reactivity	Human, Mouse, Rat, Rabbit, Zebrafish, Pig, Dog, Guinea Pig, Horse, Bovine
Predicted	Human, Mouse, Rat, Rabbit, Chicken, Dog, Guinea Pig, Horse, Bovine
Host	Rabbit
Clonality	Polyclonal
Calculated MW	121430

Additional Information

Gene ID	117600
Alias Symbol Other Names	Arhgap13, 4930572H05Rik, Srgap1 SLIT-ROBO Rho GTPase-activating protein 1, srGAP1, Rho GTPase-activating protein 13, Srgap1, Arhgap13
Format	Liquid. Purified antibody supplied in 1x PBS buffer with 0.09% (w/v) sodium azide and 2% sucrose.
Reconstitution & Storage	Add 50 ul of distilled water. Final anti-Srgap1 antibody concentration is 1 mg/ml in PBS buffer with 2% sucrose. For longer periods of storage, store at 20°C. Avoid repeat freeze-thaw cycles.
Precautions	Srgap1 antibody - middle region is for research use only and not for use in diagnostic or therapeutic procedures.

Protein Information

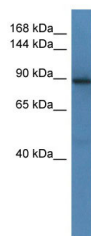
Name	Srgap1
Synonyms	Arhgap13
Function	GTPase-activating protein for RhoA and Cdc42 small GTPases. Together with CDC42 seems to be involved in the pathway mediating the repulsive signaling of Robo and Slit proteins in neuronal migration. SLIT2, probably through interaction with ROBO1, increases the interaction of SRGAP1 with ROBO1 and inactivates CDC42 (By similarity).

References

Wong K.,et al.Cell 107:209-221(2001).

Li X.,et al.J. Biol. Chem. 281:28430-28437(2006).

Images



WB Suggested Anti-Srgap1 Antibody Titration: 1.0 µg/ml
Positive Control: Mouse Brain

Please note: All products are 'FOR RESEARCH USE ONLY. NOT FOR USE IN DIAGNOSTIC OR THERAPEUTIC PROCEDURES'.