

PDP2 antibody - middle region

Rabbit Polyclonal Antibody

Catalog # AI14123

Product Information

Application	WB
Primary Accession	Q9P2J9
Other Accession	NM_020786 , NP_065837
Reactivity	Human, Mouse, Rat, Rabbit, Zebrafish, Pig, Dog, Guinea Pig, Horse, Bovine
Predicted	Human, Mouse, Rat, Rabbit, Chicken, Dog, Horse, Bovine
Host	Rabbit
Clonality	Polyclonal
Calculated MW	59978

Additional Information

Gene ID	57546
Alias Symbol	KIAA1348, PPM2C2
Other Names	[Pyruvate dehydrogenase [acetyl-transferring]]-phosphatase 2, mitochondrial, PDP 2, 3.1.3.43, Pyruvate dehydrogenase phosphatase catalytic subunit 2, PDPC 2, PDP2, KIAA1348
Format	Liquid. Purified antibody supplied in 1x PBS buffer with 0.09% (w/v) sodium azide and 2% sucrose.
Reconstitution & Storage	Add 50 ul of distilled water. Final anti-PDP2 antibody concentration is 1 mg/ml in PBS buffer with 2% sucrose. For longer periods of storage, store at 20°C. Avoid repeat freeze-thaw cycles.
Precautions	PDP2 antibody - middle region is for research use only and not for use in diagnostic or therapeutic procedures.

Protein Information

Name	PDP2 (HGNC:30263)
Synonyms	KIAA1348
Function	Mitochondrial enzyme that catalyzes the dephosphorylation and concomitant reactivation of the alpha subunit of the E1 component of the pyruvate dehydrogenase complex (PDC), thereby stimulating the conversion of pyruvate into acetyl-CoA (By similarity). Acts as a crucial regulator of T cell metabolism and function, with a particular focus on T-helper Th17 (By similarity).

Cellular Location

Mitochondrion {ECO:0000250|UniProtKB:O88484}.

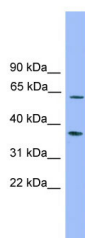
References

Nagase T.,et al.DNA Res. 7:65-73(2000).

Ota T.,et al.Nat. Genet. 36:40-45(2004).

Mural R.J.,et al.Submitted (JUL-2005) to the EMBL/GenBank/DDBJ databases.

Images



WB Suggested Anti-PDP2 Antibody Titration: 0.2-1 µg/ml

ELISA Titer: 1:1562500

Positive Control: Jurkat cell lysate

Please note: All products are 'FOR RESEARCH USE ONLY. NOT FOR USE IN DIAGNOSTIC OR THERAPEUTIC PROCEDURES'.