

PRSS22 antibody - N-terminal region

Rabbit Polyclonal Antibody

Catalog # AI14154

Product Information

Application	WB
Primary Accession	Q9GZN4
Other Accession	NM_022119 , NP_071402
Reactivity	Human, Mouse, Rat, Pig, Dog, Guinea Pig, Horse, Bovine
Predicted	Mouse, Rat, Dog, Guinea Pig
Host	Rabbit
Clonality	Polyclonal
Calculated MW	33732

Additional Information

Gene ID	64063
Alias Symbol Other Names	BSSP-4, MGC9599, SP001LA, hBSSP-4 Brain-specific serine protease 4, BSSP-4, 3.4.21.-, Serine protease 22, Serine protease 26, Tryptase epsilon, PRSS22, BSSP4, PRSS26
Format	Liquid. Purified antibody supplied in 1x PBS buffer with 0.09% (w/v) sodium azide and 2% sucrose.
Reconstitution & Storage	Add 50 ul of distilled water. Final anti-PRSS22 antibody concentration is 1 mg/ml in PBS buffer with 2% sucrose. For longer periods of storage, store at 20°C. Avoid repeat freeze-thaw cycles.
Precautions	PRSS22 antibody - N-terminal region is for research use only and not for use in diagnostic or therapeutic procedures.

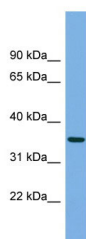
Protein Information

Name	PRSS22
Synonyms	BSSP4, PRSS26
Function	Preferentially cleaves the synthetic substrate H-D-Leu-Thr- Arg-pNA compared to tosyl-Gly-Pro-Arg-pNA.
Cellular Location	Secreted.
Tissue Location	Expressed abundantly in the epithelial cells of the airways, including trachea, esophagus and fetal lung. Scarce in adult lung. Expressed at low levels in placenta, pancreas, prostate and thyroid gland.

References

Mitsui S.,et al.Submitted (JAN-1998) to the EMBL/GenBank/DDBJ databases.
Wong G.W.,et al.J. Biol. Chem. 276:49169-49182(2001).
Clark H.F.,et al.Genome Res. 13:2265-2270(2003).
Martin J.,et al.Nature 432:988-994(2004).

Images



WB Suggested Anti-PRSS22 Antibody Titration: 0.2-1
µg/ml
ELISA Titer: 1:312500
Positive Control: HepG2 cell lysate

Please note: All products are 'FOR RESEARCH USE ONLY. NOT FOR USE IN DIAGNOSTIC OR THERAPEUTIC PROCEDURES'.