

# HS1BP3 antibody - N-terminal region

Rabbit Polyclonal Antibody  
Catalog # AI14163

## Product Information

---

<b>Application</b>	WB
<b>Primary Accession</b>	<a href="#">Q53T59</a>
<b>Other Accession</b>	<a href="#">NM_022460</a> , <a href="#">NP_071905</a>
<b>Reactivity</b>	Human, Mouse, Rat, Rabbit, Dog, Guinea Pig, Horse, Bovine
<b>Predicted</b>	Human, Rat, Rabbit, Chicken, Dog, Guinea Pig, Horse, Bovine
<b>Host</b>	Rabbit
<b>Clonality</b>	Polyclonal
<b>Calculated MW</b>	43 KDa

## Additional Information

---

<b>Alias Symbol</b>	ETM2, FLJ14249, HS1-BP3
<b>Other Names</b>	HCLS1-binding protein 3, HS1-binding protein 3, HSP1BP-3, HS1BP3
<b>Format</b>	Liquid. Purified antibody supplied in 1x PBS buffer with 0.09% (w/v) sodium azide and 2% sucrose.
<b>Reconstitution &amp; Storage</b>	Add 50 ul of distilled water. Final anti-HS1BP3 antibody concentration is 1 mg/ml in PBS buffer with 2% sucrose. For longer periods of storage, store at 20°C. Avoid repeat freeze-thaw cycles.
<b>Precautions</b>	HS1BP3 antibody - N-terminal region is for research use only and not for use in diagnostic or therapeutic procedures.

## Protein Information

---

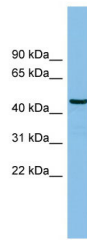
## References

---

Ota T., et al. *Nat. Genet.* 36:40-45(2004).  
Hillier L.W., et al. *Nature* 434:724-731(2005).  
Mural R.J., et al. Submitted (SEP-2005) to the EMBL/GenBank/DDBJ databases.  
Beausoleil S.A., et al. *Nat. Biotechnol.* 24:1285-1292(2006).  
Dephoure N., et al. *Proc. Natl. Acad. Sci. U.S.A.* 105:10762-10767(2008).

## Images

---



WB Suggested Anti-HS1BP3 Antibody Titration: 0.2-1  
µg/ml  
ELISA Titer: 1:1562500  
Positive Control: Human brain

Please note: All products are 'FOR RESEARCH USE ONLY. NOT FOR USE IN DIAGNOSTIC OR THERAPEUTIC PROCEDURES'.