

MFN1 antibody - middle region

Rabbit Polyclonal Antibody

Catalog # AI14182

Product Information

Application	WB
Primary Accession	Q8R4Z9
Other Accession	NM_033540 , NP_284941
Reactivity	Human, Mouse, Rat, Rabbit, Pig, Dog, Horse, Bovine
Predicted	Human, Mouse, Rat, Rabbit, Chicken, Dog, Horse, Bovine
Host	Rabbit
Clonality	Polyclonal
Calculated MW	83847

Additional Information

Gene ID	192647
Alias Symbol Other Names	DKFZp762F247, FLJ20693, MGC41806, hfzo1, hfzo2 Mitofusin-1, 3.6.5., Mitochondrial transmembrane GTPase FZO1B, Transmembrane GTPase MFN1, Mfn1, Fzo1b
Format	Liquid. Purified antibody supplied in 1x PBS buffer with 0.09% (w/v) sodium azide and 2% sucrose.
Reconstitution & Storage	Add 50 ul of distilled water. Final anti-MFN1 antibody concentration is 1 mg/ml in PBS buffer with 2% sucrose. For longer periods of storage, store at 20°C. Avoid repeat freeze-thaw cycles.
Precautions	MFN1 antibody - middle region is for research use only and not for use in diagnostic or therapeutic procedures.

Protein Information

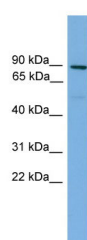
Name	Mfn1
Synonyms	Fzo1b
Function	Mitochondrial outer membrane GTPase that mediates mitochondrial clustering and fusion (PubMed: 12589796 , PubMed: 14561718). Membrane clustering requires GTPase activity. It may involve a major rearrangement of the coiled coil domains (By similarity). Mitochondria are highly dynamic organelles, and their morphology is determined by the equilibrium between mitochondrial fusion and fission events (PubMed: 14561718). Overexpression induces the formation of mitochondrial networks (in vitro) (PubMed: 14561718). Has low GTPase activity (By similarity).

Cellular Location	Mitochondrion outer membrane; Multi-pass membrane protein
Tissue Location	Ubiquitous. In brain, it is expressed at weaker level than MFN2, while it is expressed at a higher level than MFN2 in heart and testis. Expressed at high level in elongating spermatids of seminiferous tubules.

References

Eura Y.,et al.J. Biochem. 134:333-344(2003).
Ishihara N.,et al.Biochem. Biophys. Res. Commun. 301:891-898(2003).
Honda S.,et al.Biochem. Biophys. Res. Commun. 311:424-432(2003).
Eura Y.,et al.J. Cell Sci. 119:4913-4925(2006).

Images



WB Suggested Anti-MFN1 Antibody Titration: 0.2-1 µg/ml
Positive Control: Human Placenta

Please note: All products are 'FOR RESEARCH USE ONLY. NOT FOR USE IN DIAGNOSTIC OR THERAPEUTIC PROCEDURES'.