

ASB3 antibody - middle region

Rabbit Polyclonal Antibody

Catalog # AI14189

Product Information

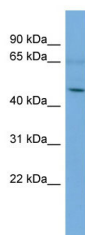
Application	WB
Primary Accession	D6W5B5
Other Accession	NM_145863 , NP_665862
Reactivity	Human, Rat, Dog, Guinea Pig, Horse, Bovine
Predicted	Human, Pig, Dog, Guinea Pig, Horse, Bovine
Host	Rabbit
Clonality	Polyclonal
Calculated MW	49 KDa

Additional Information

Alias Symbol	ASB-3, FLJ10123, FLJ10421, MGC12531, MGC132002, MGC996
Format	Liquid. Purified antibody supplied in 1x PBS buffer with 0.09% (w/v) sodium azide and 2% sucrose.
Reconstitution & Storage	Add 50 ul of distilled water. Final anti-ASB3 antibody concentration is 1 mg/ml in PBS buffer with 2% sucrose. For longer periods of storage, store at 20°C. Avoid repeat freeze-thaw cycles.
Precautions	ASB3 antibody - middle region is for research use only and not for use in diagnostic or therapeutic procedures.

Protein Information

Images



WB Suggested Anti-ASB3 Antibody Titration: 0.2-1 µg/ml
ELISA Titer: 1:312500
Positive Control: A549 cell lysate