

PPP2R1B antibody - N-terminal region

Rabbit Polyclonal Antibody

Catalog # AI14196

Product Information

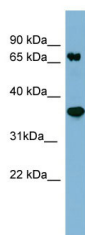
Application	WB
Primary Accession	A8K8B0
Other Accession	NM_181699 , NP_859050
Reactivity	Human, Mouse, Rat, Rabbit, Zebrafish, Dog, Guinea Pig, Horse, Bovine, Yeast
Predicted	Human, Mouse, Rat, Rabbit, Zebrafish, Dog, Guinea Pig, Horse, Bovine
Host	Rabbit
Clonality	Polyclonal
Calculated MW	73 kDa

Additional Information

Alias Symbol	MGC26454, PR65B, PP2A-Abeta
Format	Liquid. Purified antibody supplied in 1x PBS buffer with 0.09% (w/v) sodium azide and 2% sucrose.
Reconstitution & Storage	Add 50 ul of distilled water. Final anti-PPP2R1B antibody concentration is 1 mg/ml in PBS buffer with 2% sucrose. For longer periods of storage, store at 20°C. Avoid repeat freeze-thaw cycles.
Precautions	PPP2R1B antibody - N-terminal region is for research use only and not for use in diagnostic or therapeutic procedures.

Protein Information

Images



WB Suggested Anti-PPP2R1B Antibody Titration: 0.2-1 µg/ml
ELISA Titer: 1:1562500
Positive Control: Human Thymus