

HLX Antibody - C-terminal region

Rabbit Polyclonal Antibody

Catalog # AI14242

Product Information

Application	WB
Primary Accession	Q14774
Other Accession	NP_068777
Reactivity	Human
Predicted	Human, Mouse, Rat, Rabbit, Pig, Dog, Guinea Pig, Horse, Bovine
Host	Rabbit
Clonality	Polyclonal
Calculated MW	50789

Additional Information

Gene ID	3142
Alias Symbol Other Names	HLX, HLX1, H2.0-like homeobox protein, Homeobox protein HB24, Homeobox protein HLX1, HLX, HLX1
Format	Liquid. Purified antibody supplied in 1x PBS buffer with 0.09% (w/v) sodium azide and 2% sucrose.
Reconstitution & Storage	Add 50 μ l of distilled water. Final Anti-HLX antibody concentration is 1 mg/ml in PBS buffer with 2% sucrose. For longer periods of storage, store at -20°C. Avoid repeat freeze-thaw cycles.
Precautions	HLX Antibody - C-terminal region is for research use only and not for use in diagnostic or therapeutic procedures.

Protein Information

Name	HLX
Synonyms	HLX1
Function	Transcription factor required for TBX21/T-bet-dependent maturation of Th1 cells as well as maintenance of Th1-specific gene expression. Involved in embryogenesis and hematopoiesis (By similarity).
Cellular Location	Nucleus {ECO:0000255 PROSITE-ProRule:PRU00108}.
Tissue Location	Low level in normal B and T-cells, high level in activated lymphocytes and monocytes. Also found in thymus, tonsil, bone marrow, developing vessels,

References

Deguchi Y.,et al.New Biol. 3:353-363(1991).

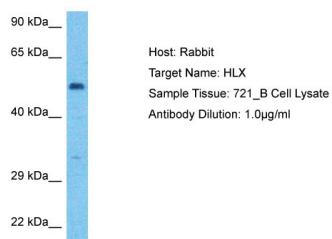
Hanrahan V.,et al.Submitted (DEC-1999) to the EMBL/GenBank/DDBJ databases.

Ota T.,et al.Nat. Genet. 36:40-45(2004).

Totoki Y.,et al.Submitted (MAR-2005) to the EMBL/GenBank/DDBJ databases.

Gregory S.G.,et al.Nature 441:315-321(2006).

Images



Host: Rabbit
Target Name: HLX
Sample Tissue: 721_B Whole Cell lysates
Antibody Dilution: 1.0µg/ml

Please note: All products are 'FOR RESEARCH USE ONLY. NOT FOR USE IN DIAGNOSTIC OR THERAPEUTIC PROCEDURES'.