

# SHOX2 antibody - middle region

Rabbit Polyclonal Antibody

Catalog # AI14251

## Product Information

---

<b>Application</b>	WB
<b>Primary Accession</b>	<a href="#">O60902</a>
<b>Other Accession</b>	<a href="#">NM_006884</a> , <a href="#">NP_006875</a>
<b>Reactivity</b>	Human, Mouse, Rat, Dog, Guinea Pig, Bovine
<b>Predicted</b>	Human, Mouse, Rat, Dog, Bovine
<b>Host</b>	Rabbit
<b>Clonality</b>	Polyclonal
<b>Calculated MW</b>	34953

## Additional Information

---

<b>Gene ID</b>	6474
<b>Alias Symbol</b>	OG12, OG12X, OGI2X, SHOT
<b>Other Names</b>	Short stature homeobox protein 2, Homeobox protein Og12X, Paired-related homeobox protein SHOT, SHOX2, OG12X, SHOT
<b>Format</b>	Liquid. Purified antibody supplied in 1x PBS buffer with 0.09% (w/v) sodium azide and 2% sucrose.
<b>Reconstitution &amp; Storage</b>	Add 50 ul of distilled water. Final anti-SHOX2 antibody concentration is 1 mg/ml in PBS buffer with 2% sucrose. For longer periods of storage, store at 20°C. Avoid repeat freeze-thaw cycles.
<b>Precautions</b>	SHOX2 antibody - middle region is for research use only and not for use in diagnostic or therapeutic procedures.

## Protein Information

---

<b>Name</b>	SHOX2
<b>Synonyms</b>	OG12X, SHOT
<b>Function</b>	May be a growth regulator and have a role in specifying neural systems involved in processing somatosensory information, as well as in face and body structure formation.
<b>Cellular Location</b>	Nucleus.
<b>Tissue Location</b>	Expressed in heart, skeletal muscle, liver, lung, bone marrow fibroblast, pancreas and placenta

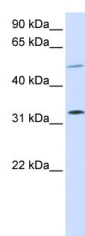
## References

---

Blaschke R.J.,et al.Proc. Natl. Acad. Sci. U.S.A. 95:2406-2411(1998).  
Semina E.V.,et al.Hum. Mol. Genet. 7:415-422(1998).  
Hillman R.T.,et al.Genome Biol. 5:R8.1-R8.16(2004).

## Images

---



WB Suggested Anti-SHOX2 Antibody Titration: 0.2-1 µg/ml  
ELISA Titer: 1:62500  
Positive Control: 293T cell lysate

Please note: All products are 'FOR RESEARCH USE ONLY. NOT FOR USE IN DIAGNOSTIC OR THERAPEUTIC PROCEDURES'.