

# PSMC3 antibody - N-terminal region

Rabbit Polyclonal Antibody

Catalog # AI14257

## Product Information

---

<b>Application</b>	WB
<b>Primary Accession</b>	<a href="#">P17980</a>
<b>Other Accession</b>	<a href="#">NM_002804</a> , <a href="#">NP_002795</a>
<b>Reactivity</b>	Human, Mouse, Rat, Rabbit, Zebrafish, Pig, Dog, Guinea Pig, Horse, Bovine
<b>Predicted</b>	Human, Mouse, Rat, Rabbit, Zebrafish, Pig, Chicken, Dog, Guinea Pig, Horse, Bovine
<b>Host</b>	Rabbit
<b>Clonality</b>	Polyclonal
<b>Calculated MW</b>	49204

## Additional Information

---

<b>Gene ID</b>	5702
<b>Alias Symbol</b>	MGC8487, TBP1
<b>Other Names</b>	26S protease regulatory subunit 6A, 26S proteasome AAA-ATPase subunit RPT5, Proteasome 26S subunit ATPase 3, Proteasome subunit P50, Tat-binding protein 1, TBP-1, PSMC3, TBP1
<b>Format</b>	Liquid. Purified antibody supplied in 1x PBS buffer with 0.09% (w/v) sodium azide and 2% sucrose.
<b>Reconstitution &amp; Storage</b>	Add 50 ul of distilled water. Final anti-PSMC3 antibody concentration is 1 mg/ml in PBS buffer with 2% sucrose. For longer periods of storage, store at 20°C. Avoid repeat freeze-thaw cycles.
<b>Precautions</b>	PSMC3 antibody - N-terminal region is for research use only and not for use in diagnostic or therapeutic procedures.

## Protein Information

---

<b>Name</b>	PSMC3
<b>Synonyms</b>	TBP1
<b>Function</b>	Component of the 26S proteasome, a multiprotein complex involved in the ATP-dependent degradation of ubiquitinated proteins. This complex plays a key role in the maintenance of protein homeostasis by removing misfolded or damaged proteins, which could impair cellular functions, and by removing proteins whose functions are no longer required. Therefore, the proteasome participates in numerous cellular processes, including cell cycle progression,

apoptosis, or DNA damage repair. PSMC3 belongs to the heterohexameric ring of AAA (ATPases associated with diverse cellular activities) proteins that unfolds ubiquitinated target proteins that are concurrently translocated into a proteolytic chamber and degraded into peptides.

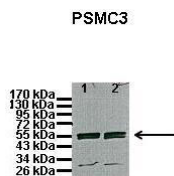
## Cellular Location

Cytoplasm. Nucleus. Note=Colocalizes with TRIM5 in the cytoplasmic bodies {ECO:0000250|UniProtKB:O88685}

## References

Ohana B.,et al.Proc. Natl. Acad. Sci. U.S.A. 90:138-142(1993).  
Ota T.,et al.Nat. Genet. 36:40-45(2004).  
Mural R.J.,et al.Submitted (SEP-2005) to the EMBL/GenBank/DDBJ databases.  
Suzuki Y.,et al.Submitted (APR-2005) to the EMBL/GenBank/DDBJ databases.  
Nelbock P.,et al.Science 248:1650-1653(1990).

## Images



See Immunoblot 2 Data and customer Feedback for more Information

Lanes: 1: 10ug proteasome fraction from C57B1/6J mouse brain, 2: 10ug proteasome fraction from BLAB/C mouse brain

Primary Antibody Dilution: 1:500

Secondary Antibody: Anti-rabbit HRP

Secondary Antibody Dilution: 1:5000

Gene Name: PSMC3

Submitted by: Dr. Scott Wilson, University of Alabama at Birmingham

Please note: All products are 'FOR RESEARCH USE ONLY. NOT FOR USE IN DIAGNOSTIC OR THERAPEUTIC PROCEDURES'.