

Impa2 Antibody - C-terminal region

Rabbit Polyclonal Antibody

Catalog # AI14262

Product Information

Application	WB
Primary Accession	Q91UZ5
Other Accession	NM_053261 , NP_444491
Reactivity	Human, Mouse, Rat, Rabbit, Zebrafish, Dog, Guinea Pig, Horse, Bovine
Predicted	Human, Mouse, Rat, Rabbit, Zebrafish, Pig, Dog, Guinea Pig, Horse, Bovine
Host	Rabbit
Clonality	Polyclonal
Calculated MW	31716

Additional Information

Gene ID	114663
Alias Symbol	2210415D20Rik, AI326924, AW259601
Other Names	Inositol monophosphatase 2, IMP 2, IMPase 2, 3.1.3.25, Inositol-1(or 4)-monophosphatase 2, Myo-inositol monophosphatase A2, Impa2
Format	Liquid. Purified antibody supplied in 1x PBS buffer with 0.09% (w/v) sodium azide and 2% sucrose.
Reconstitution & Storage	Add 50 ul of distilled water. Final anti-Impa2 antibody concentration is 1 mg/ml in PBS buffer with 2% sucrose. For longer periods of storage, store at 20°C. Avoid repeat freeze-thaw cycles.
Precautions	Impa2 Antibody - C-terminal region is for research use only and not for use in diagnostic or therapeutic procedures.

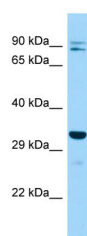
Protein Information

Name	Impa2 {ECO:0000312 MGI:MGI:2149728}
Function	Phosphatase that can use myo-inositol monophosphates, myo- inositol 1,4-diphosphate, scyllo-inositol-1,4-diphosphate, glucose-1- phosphate, beta-glycerophosphate and 2'-AMP as substrates in vitro. No physiological substrates has been described yet. Has been implicated as the pharmacological target for lithium Li(+) action in brain.
Cellular Location	Cytoplasm {ECO:0000250 UniProtKB:O14732}.
Tissue Location	Mostly expressed in brain, small intestine, heart, kidney, and spleen (at protein level).

References

Shamir A.,et al.Gene 271:285-291(2001).
Ohnishi T.,et al.J. Biol. Chem. 282:637-646(2007).

Images



Host: Rabbit
Target Name: Impa2
Sample Tissue: Mouse Testis lysates
Antibody Dilution: 1.0µg/ml

Please note: All products are 'FOR RESEARCH USE ONLY. NOT FOR USE IN DIAGNOSTIC OR THERAPEUTIC PROCEDURES'.