

TFPI2 antibody - middle region

Rabbit Polyclonal Antibody

Catalog # AI14265

Product Information

| | |
|--------------------------|---|
| Application | WB, IHC |
| Primary Accession | P48307 |
| Other Accession | NM_006528 , NP_006519 |
| Reactivity | Human |
| Predicted | Human |
| Host | Rabbit |
| Clonality | Polyclonal |
| Calculated MW | 26934 |

Additional Information

| | |
|-------------------------------------|--|
| Gene ID | 7980 |
| Alias Symbol | FLJ21164, PP5, TFPI-2, REF1 |
| Other Names | Tissue factor pathway inhibitor 2, TFPI-2, Placental protein 5, PP5, TFPI2 |
| Format | Liquid. Purified antibody supplied in 1x PBS buffer with 0.09% (w/v) sodium azide and 2% sucrose. |
| Reconstitution & Storage | Add 50 ul of distilled water. Final anti-TFPI2 antibody concentration is 1 mg/ml in PBS buffer with 2% sucrose. For longer periods of storage, store at 20°C. Avoid repeat freeze-thaw cycles. |
| Precautions | TFPI2 antibody - middle region is for research use only and not for use in diagnostic or therapeutic procedures. |

Protein Information

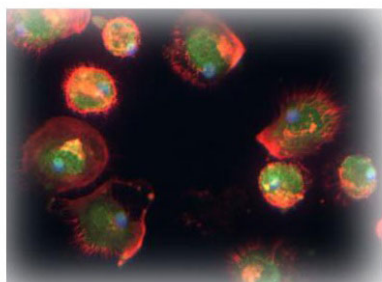
| | |
|--------------------------|--|
| Name | TFPI2 |
| Function | May play a role in the regulation of plasmin-mediated matrix remodeling. Inhibits trypsin, plasmin, factor VIIa/tissue factor and weakly factor Xa. Has no effect on thrombin. |
| Cellular Location | Secreted. |
| Tissue Location | Umbilical vein endothelial cells, liver, placenta, heart, pancreas, and maternal serum at advanced pregnancy |

References

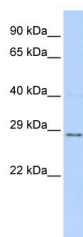
Miyagi Y.,et al.J. Biochem. 116:939-942(1994).
Sprecher C.A.,et al.Proc. Natl. Acad. Sci. U.S.A. 91:3353-3357(1994).
Kamei S.,et al.Biochim. Biophys. Acta 1517:430-435(2001).
Xu Y.,et al.Submitted (JUL-2004) to the EMBL/GenBank/DDBJ databases.
Ota T.,et al.Nat. Genet. 36:40-45(2004).

Images

TFP12



Sample Type: Human Macrophange Cells Green: primary
Red: phalloidin Blue: DAPI Yellow: green/red Primary
Dilution: 1:200
Secondary Antibody: anti-Rabbit IgG-FITC Secondary
Dilution: 1:1000 Image
Submitted by: Milan Fiala University of California, Los Angeles



WB Suggested Anti-TFPI2 Antibody Titration: 0.2-1 µg/ml
ELISA Titer: 1:62500
Positive Control: MCF7 cell lysate

Please note: All products are 'FOR RESEARCH USE ONLY. NOT FOR USE IN DIAGNOSTIC OR THERAPEUTIC PROCEDURES'.