

RGD1560617 Antibody - middle region

Rabbit Polyclonal Antibody

Catalog # AI14279

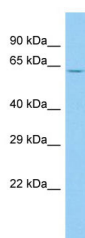
Product Information

| | |
|------------------------|--|
| Application | WB |
| Other Accession | XM_238518 , XP_238518 |
| Reactivity | Human, Mouse, Rat, Rabbit, Zebrafish, Pig, Dog, Guinea Pig, Horse, Bovine, Yeast |
| Predicted | Human, Mouse, Rat, Rabbit, Zebrafish, Pig, Dog, Guinea Pig, Horse, Bovine, Yeast |
| Host | Rabbit |
| Clonality | Polyclonal |
| Calculated MW | 64 kDa |

Additional Information

| | |
|-------------------------------------|---|
| Format | Liquid. Purified antibody supplied in 1x PBS buffer with 0.09% (w/v) sodium azide and 2% sucrose. |
| Reconstitution & Storage | Add 50 ul of distilled water. Final anti-RGD1560617 antibody concentration is 1 mg/ml in PBS buffer with 2% sucrose. For longer periods of storage, store at 20°C. Avoid repeat freeze-thaw cycles. |
| Precautions | RGD1560617 Antibody - middle region is for research use only and not for use in diagnostic or therapeutic procedures. |

Images



Host: Rabbit
Target Name: RGD1560617
Sample Tissue: Rat Thymus lysates
Antibody Dilution: 1.0µg/ml

Please note: All products are 'FOR RESEARCH USE ONLY. NOT FOR USE IN DIAGNOSTIC OR THERAPEUTIC PROCEDURES'.