

# Nap1l4 Antibody - N-terminal region

Rabbit Polyclonal Antibody

Catalog # AI14280

## Product Information

Application	WB
Primary Accession	<a href="#">Q78ZA7</a>
Other Accession	<a href="#">NM_008672</a> , <a href="#">NP_032698</a>
Reactivity	Human, Mouse, Rat, Rabbit, Zebrafish, Pig, Dog, Guinea Pig, Horse, Bovine
Predicted	Human, Mouse, Rat, Rabbit, Zebrafish, Pig, Dog, Guinea Pig, Horse, Bovine
Host	Rabbit
Clonality	Polyclonal
Calculated MW	42679

## Additional Information

Gene ID	17955
Alias Symbol	2810410H14Rik, AI316776, D7Wsu30e, Nap2
Other Names	Nucleosome assembly protein 1-like 4, Nap1l4
Format	Liquid. Purified antibody supplied in 1x PBS buffer with 0.09% (w/v) sodium azide and 2% sucrose.
Reconstitution & Storage	Add 50 ul of distilled water. Final anti-Nap1l4 antibody concentration is 1 mg/ml in PBS buffer with 2% sucrose. For longer periods of storage, store at 20°C. Avoid repeat freeze-thaw cycles.
Precautions	Nap1l4 Antibody - N-terminal region is for research use only and not for use in diagnostic or therapeutic procedures.

## Protein Information

Name	Nap1l4
Function	Acts as a histone chaperone in nucleosome assembly (PubMed: <a href="#">28366643</a> ). In condensing spermatids, mediates the loading of the heterodimer composed of histones H2AB1 and H2BC1/TH2B onto the nucleosomes, thereby promoting the replacement of histones to protamine in male germ cells (PubMed: <a href="#">28366643</a> ).
Cellular Location	Nucleus {ECO:0000250 UniProtKB:Q99733}. Cytoplasm {ECO:0000250 UniProtKB:Q99733}. Note=Present in the cytoplasm and excluded from the nucleus during G0/G1 phase, then relocates to the nucleus by the time cells are in S phase. Phosphorylated form localizes in the cytoplasm during the G0/G1 transition, whereas dephosphorylation leads to

relocalization into the nucleus at the G1/S-boundary  
{ECO:0000250|UniProtKB:Q99733}

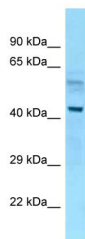
## References

---

Paulsen M.,et al.Hum. Mol. Genet. 7:1149-1159(1998).  
Engemann S.,et al.Hum. Mol. Genet. 9:2691-2706(2000).  
van Dijk J.,et al.Mol. Cell 26:437-448(2007).  
Villen J.,et al.Proc. Natl. Acad. Sci. U.S.A. 104:1488-1493(2007).  
Sweet S.M.,et al.Mol. Cell. Proteomics 8:904-912(2009).

## Images

---



WB Suggested Anti-Nap1l4 Antibody Titration: 1.0 µg/ml  
Positive Control: Mouse Liver

Please note: All products are 'FOR RESEARCH USE ONLY. NOT FOR USE IN DIAGNOSTIC OR THERAPEUTIC PROCEDURES'.