

Ccnb1ip1 Antibody - N-terminal region

Rabbit Polyclonal Antibody

Catalog # AI14293

Product Information

| | |
|--------------------------|--|
| Application | WB |
| Primary Accession | D3Z3K2 |
| Other Accession | NM_001111119 , NP_001104589 |
| Reactivity | Human, Mouse, Rat, Rabbit, Pig, Dog, Guinea Pig, Horse, Bovine |
| Predicted | Human, Mouse, Rat, Rabbit, Pig, Dog, Guinea Pig, Horse, Bovine |
| Host | Rabbit |
| Clonality | Polyclonal |
| Calculated MW | 31386 |

Additional Information

| | |
|-------------------------------------|---|
| Gene ID | 239083 |
| Alias Symbol | Gm288, Hei10, mei4 |
| Other Names | E3 ubiquitin-protein ligase CCNB1IP1, 6.3.2.-, Cyclin-B1-interacting protein 1, Ccnb1ip1, Gm288, Hei10, Mei4 |
| Format | Liquid. Purified antibody supplied in 1x PBS buffer with 0.09% (w/v) sodium azide and 2% sucrose. |
| Reconstitution & Storage | Add 50 ul of distilled water. Final anti-Ccnb1ip1 antibody concentration is 1 mg/ml in PBS buffer with 2% sucrose. For longer periods of storage, store at 20°C. Avoid repeat freeze-thaw cycles. |
| Precautions | Ccnb1ip1 Antibody - N-terminal region is for research use only and not for use in diagnostic or therapeutic procedures. |

Protein Information

| | |
|-----------------|---|
| Name | Ccnb1ip1 |
| Synonyms | Gm288, Hei10, Mei4 |
| Function | Ubiquitin E3 ligase that acts as a limiting factor for crossing-over during meiosis: required during zygonema to limit the colocalization of RNF212 with MutS-gamma-associated recombination sites and thereby establish early differentiation of crossover and non- crossover sites. Later, it is directed by MutL-gamma to stably accumulate at designated crossover sites. Probably promotes the dissociation of RNF212 and MutS-gamma to allow the progression of recombination and the implementation of the final steps of crossing over. Modulates cyclin-B levels and participates in the regulation of |

cell cycle progression through the G2 phase. Overexpression causes delayed entry into mitosis.

Cellular Location

Nucleus. Chromosome. Note=Associates to the synaptonemal complex

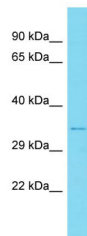
Tissue Location

Expressed predominantly in the testes and 17 day embryos (corresponding to prophase I in females). Weakly or not expressed in other tissues.

References

Church D.M.,et al.PLoS Biol. 7:E1000112-E1000112(2009).
Mural R.J.,et al.Submitted (JUL-2005) to the EMBL/GenBank/DDBJ databases.
Ward J.O.,et al.PLoS Genet. 3:E139-E139(2007).
Strong E.R.,et al.Genes (Basel) 1:440-451(2010).
Qiao H.,et al.Nat. Genet. 46:194-199(2014).

Images



Host: Rabbit
Target Name: Ccnb1ip1
Sample Tissue: Mouse Thymus lysates
Antibody Dilution: 1.0µg/ml

Please note: All products are 'FOR RESEARCH USE ONLY. NOT FOR USE IN DIAGNOSTIC OR THERAPEUTIC PROCEDURES'.