

DLD antibody - middle region

Rabbit Polyclonal Antibody

Catalog # AI14295

Product Information

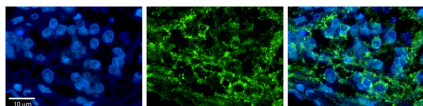
Application	WB, IHC
Primary Accession	B2R5X0
Other Accession	NM_000108 , NP_000099
Reactivity	Human, Mouse, Rat, Rabbit, Zebrafish, Pig, Dog, Guinea Pig, Horse, Bovine, Yeast
Predicted Host	Human, Mouse, Rat, Rabbit, Zebrafish, Pig, Chicken, Dog, Horse, Bovine
Clonality	Rabbit
Calculated MW	Polyclonal 56 KDa

Additional Information

Alias Symbol	DLDH, E3, GCSL, LAD, PHE3
Format	Liquid. Purified antibody supplied in 1x PBS buffer with 0.09% (w/v) sodium azide and 2% sucrose.
Reconstitution & Storage	Add 50 ul of distilled water. Final anti-DLD antibody concentration is 1 mg/ml in PBS buffer with 2% sucrose. For longer periods of storage, store at 20°C. Avoid repeat freeze-thaw cycles.
Precautions	DLD antibody - middle region is for research use only and not for use in diagnostic or therapeutic procedures.

Protein Information

Images



Rabbit Anti-DLD Antibody
Catalog Number: AI14295
Formalin Fixed Paraffin Embedded Tissue: Human Pineal
Tissue Observed Staining: Cytoplasmic in cell bodies and
processes of pinealocytes
Primary Antibody
Concentration: 1:100
Secondary Antibody: Donkey anti-Rabbit-Cy3
Secondary Antibody
Concentration: 1:200
Magnification: 20X
Exposure Time: 0.5 - 2.0 sec



WB Suggested Anti-DLD Antibody Titration: 0.2-1 µg/ml
ELISA Titer: 1:62500
Positive Control: Jurkat cell lysate
DLD is supported by BioGPS gene expression data to be expressed in Jurkat

Please note: All products are 'FOR RESEARCH USE ONLY. NOT FOR USE IN DIAGNOSTIC OR THERAPEUTIC PROCEDURES'.