

Tubb2a Antibody - C-terminal region

Rabbit Polyclonal Antibody

Catalog # AI14306

Product Information

Application	WB
Primary Accession	Q7TMM9
Other Accession	NM_009450 , NP_033476
Reactivity	Human, Mouse, Rat, Rabbit, Zebrafish, Dog, Guinea Pig, Horse, Bovine
Predicted	Human, Mouse, Rat, Rabbit, Zebrafish, Pig, Dog, Guinea Pig, Horse, Bovine
Host	Rabbit
Clonality	Polyclonal
Calculated MW	49907

Additional Information

Gene ID	22151
Alias Symbol	M(beta)2, Tubb2
Other Names	Tubulin beta-2A chain, Tubb2a, Tubb2
Format	Liquid. Purified antibody supplied in 1x PBS buffer with 0.09% (w/v) sodium azide and 2% sucrose.
Reconstitution & Storage	Add 50 ul of distilled water. Final anti-Tubb2a antibody concentration is 1 mg/ml in PBS buffer with 2% sucrose. For longer periods of storage, store at 20°C. Avoid repeat freeze-thaw cycles.
Precautions	Tubb2a Antibody - C-terminal region is for research use only and not for use in diagnostic or therapeutic procedures.

Protein Information

Name	Tubb2a
Synonyms	Tubb2
Function	Tubulin is the major constituent of microtubules, a cylinder consisting of laterally associated linear protofilaments composed of alpha- and beta-tubulin heterodimers. Microtubules grow by the addition of GTP-tubulin dimers to the microtubule end, where a stabilizing cap forms. Below the cap, tubulin dimers are in GDP-bound state, owing to GTPase activity of alpha-tubulin.
Cellular Location	Cytoplasm, cytoskeleton.

References

Carninci P.,et al.Science 309:1559-1563(2005).

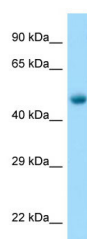
Lubec G.,et al.Submitted (JAN-2009) to UniProtKB.

Janke C.,et al.Science 308:1758-1762(2005).

Rogowski K.,et al.Cell 137:1076-1087(2009).

Yoshida K.,et al.Biochem. Biophys. Res. Commun. 389:506-511(2009).

Images



WB Suggested Anti-Tubb2a Antibody Titration: 1.0 µg/ml
Positive Control: Mouse Muscle

Please note: All products are 'FOR RESEARCH USE ONLY. NOT FOR USE IN DIAGNOSTIC OR THERAPEUTIC PROCEDURES'.