

# Wipf1 Antibody - N-terminal region

Rabbit Polyclonal Antibody

Catalog # AI14317

## Product Information

---

|                          |  |
|--------------------------|--|
| <b>Application</b>       | WB   |
| <b>Primary Accession</b> | <a href="#">Q6IN36</a>   |
| <b>Other Accession</b>   | <a href="#">NM_057192</a> , <a href="#">NP_476540</a>          |
| <b>Reactivity</b>        | Human, Mouse, Rat, Rabbit, Dog, Guinea Pig, Horse, Bovine      |
| <b>Predicted</b>         | Human, Mouse, Rat, Rabbit, Pig, Dog, Guinea Pig, Horse, Bovine |
| <b>Host</b>              | Rabbit   |
| <b>Clonality</b>         | Polyclonal   |
| <b>Calculated MW</b>     | 49751  |

## Additional Information

---

|                                     |  |
|-------------------------------------|--|
| <b>Gene ID</b>                      | 117538   |
| <b>Alias Symbol</b>                 | Waspip, Wip  |
| <b>Other Names</b>                  | WAS/WASL-interacting protein family member 1, Wiskott-Aldrich syndrome protein-interacting protein, WASP-interacting protein, Wipf1, Waspip, Wip   |
| <b>Format</b>                       | Liquid. Purified antibody supplied in 1x PBS buffer with 0.09% (w/v) sodium azide and 2% sucrose.  |
| <b>Reconstitution &amp; Storage</b> | Add 50 ul of distilled water. Final anti-Wipf1 antibody concentration is 1 mg/ml in PBS buffer with 2% sucrose. For longer periods of storage, store at 20°C. Avoid repeat freeze-thaw cycles. |
| <b>Precautions</b>                  | Wipf1 Antibody - N-terminal region is for research use only and not for use in diagnostic or therapeutic procedures.   |

## Protein Information

---

|                          |   |
|--------------------------|---|
| <b>Name</b>              | Wipf1   |
| <b>Synonyms</b>          | Waspip, Wip   |
| <b>Function</b>          | Plays a role in the reorganization of the actin cytoskeleton. Contributes with NCK1 and GRB2 in the recruitment and activation of WASL. Plays a role in the formation of cell ruffles (By similarity). May participate in regulating the subcellular localization of WASL, resulting in the disassembly of stress fibers in favor of filopodia formation. |
| <b>Cellular Location</b> | Cytoplasmic vesicle. Cytoplasm, cytoskeleton. Cell projection, ruffle<br>Note=Vesicle surfaces and along actin tails. Colocalizes with actin stress   |

fibers. When coexpressed with WASL, no longer associated with actin filaments but accumulated in perinuclear and cortical areas like WASL

## Tissue Location

Isoforms were differentially expressed. One isoform was ubiquitously expressed, another was muscle-specific and another was expressed in the liver, heart and testis

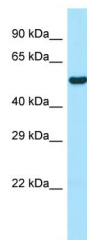
## References

---

Vetterkind S., et al. J. Biol. Chem. 277:87-95(2002).

## Images

---



WB Suggested Anti-Wipf1 Antibody Titration: 1.0 µg/ml  
Positive Control: Rat Small Intestine

Please note: All products are 'FOR RESEARCH USE ONLY. NOT FOR USE IN DIAGNOSTIC OR THERAPEUTIC PROCEDURES'.