

FLJ14803 antibody - N-terminal region

Rabbit Polyclonal Antibody

Catalog # AI14318

Product Information

Application	WB
Primary Accession	Q96SK2
Other Accession	NM_032842 , NP_116231
Reactivity	Human, Mouse, Rat, Rabbit, Pig, Dog, Guinea Pig, Horse, Bovine
Predicted	Human, Mouse, Rat, Dog, Bovine
Host	Rabbit
Clonality	Polyclonal
Calculated MW	62922

Additional Information

Gene ID	84928
Alias Symbol	NET31, FLJ14803
Other Names	Transmembrane protein 209, TMEM209
Format	Liquid. Purified antibody supplied in 1x PBS buffer with 0.09% (w/v) sodium azide and 2% sucrose.
Reconstitution & Storage	Add 50 ul of distilled water. Final anti-FLJ14803 antibody concentration is 1 mg/ml in PBS buffer with 2% sucrose. For longer periods of storage, store at 20°C. Avoid repeat freeze-thaw cycles.
Precautions	FLJ14803 antibody - N-terminal region is for research use only and not for use in diagnostic or therapeutic procedures.

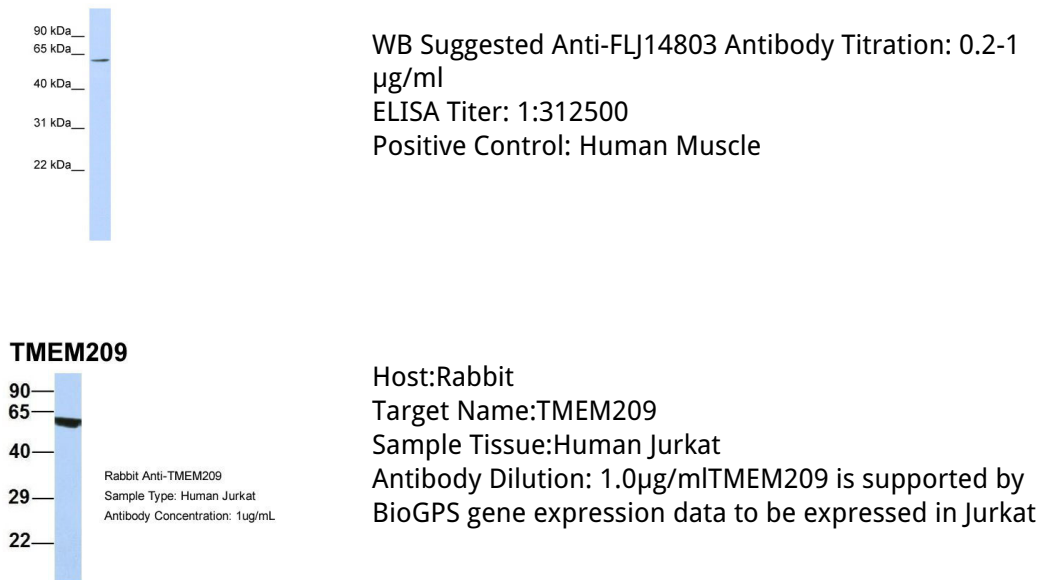
Protein Information

Name	TMEM209
Function	Nuclear envelope protein which in association with NUP205, may be involved in nuclear transport of various nuclear proteins in addition to MYC.
Cellular Location	Membrane; Multi-pass membrane protein. Nucleus envelope Golgi apparatus. Cytoplasm. Note=Weakly expressed in the cytoplasm
Tissue Location	Expressed in the testis.

References

Ota T.,et al.Nat. Genet. 36:40-45(2004).
Hillier L.W.,et al.Nature 424:157-164(2003).
Scherer S.W.,et al.Science 300:767-772(2003).
Mural R.J.,et al.Submitted (JUL-2005) to the EMBL/GenBank/DDBJ databases.
Daub H.,et al.Mol. Cell 31:438-448(2008).

Images



Please note: All products are 'FOR RESEARCH USE ONLY. NOT FOR USE IN DIAGNOSTIC OR THERAPEUTIC PROCEDURES'.