

# RP11-217H1.1 antibody - N-terminal region

Rabbit Polyclonal Antibody

Catalog # AI14323

## Product Information

<b>Application</b>	WB
<b>Primary Accession</b>	<a href="#">B4DH58</a>
<b>Other Accession</b>	<a href="#">NM_032121</a> , <a href="#">NP_115497</a>
<b>Reactivity</b>	Human, Mouse, Rat, Pig, Dog, Guinea Pig, Horse, Bovine
<b>Predicted</b>	Human, Mouse, Rat, Dog
<b>Host</b>	Rabbit
<b>Clonality</b>	Polyclonal
<b>Calculated MW</b>	41 kDa

## Additional Information

<b>Alias Symbol</b>	DKFZp564K142, FLJ14726, MAGT1, MGC64926, PRO0756, bA217H1.1, IAP, XMEN, MRX95, OST3B, RP11-217H1.1
<b>Format</b>	Liquid. Purified antibody supplied in 1x PBS buffer with 0.09% (w/v) sodium azide and 2% sucrose.
<b>Reconstitution &amp; Storage</b>	Add 50 ul of distilled water. Final anti-RP11-217H1.1 antibody concentration is 1 mg/ml in PBS buffer with 2% sucrose. For longer periods of storage, store at 20°C. Avoid repeat freeze-thaw cycles.
<b>Precautions</b>	RP11-217H1.1 antibody - N-terminal region is for research use only and not for use in diagnostic or therapeutic procedures.

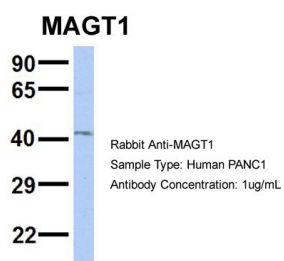
## Protein Information

## Images



WB Suggested Anti-RP11-217H1.1 Antibody Titration:  
0.2-1 µg/ml  
ELISA Titer: 1:1562500  
Positive Control: Human brain

Host: Rabbit



Target Name: MAGT1  
Sample Tissue: PANC1  
Antibody Dilution: 1.0µg/mL  
MAGT1 is supported by  
BioGPS gene expression data to be expressed in PANC1

Please note: All products are 'FOR RESEARCH USE ONLY. NOT FOR USE IN DIAGNOSTIC OR THERAPEUTIC PROCEDURES'.