

SLIT3 antibody - N-terminal region

Rabbit Polyclonal Antibody

Catalog # AI14324

Product Information

Application	WB
Primary Accession	O75094
Other Accession	NM_003062 , NP_003053
Reactivity	Human, Mouse, Rat, Rabbit, Dog, Guinea Pig, Horse, Bovine
Predicted	Human, Mouse, Rat, Rabbit, Chicken, Guinea Pig, Horse, Bovine
Host	Rabbit
Clonality	Polyclonal
Calculated MW	167713

Additional Information

Gene ID	6586
Alias Symbol	FLJ10764, MEGF5, SLIL2, SLIT1, Slit-3, slit2
Other Names	Slit homolog 3 protein, Slit-3, Multiple epidermal growth factor-like domains protein 5, Multiple EGF-like domains protein 5, SLIT3, KIAA0814, MEGF5, SLIL2
Format	Liquid. Purified antibody supplied in 1x PBS buffer with 0.09% (w/v) sodium azide and 2% sucrose.
Reconstitution & Storage	Add 50 ul of distilled water. Final anti-SLIT3 antibody concentration is 1 mg/ml in PBS buffer with 2% sucrose. For longer periods of storage, store at 20°C. Avoid repeat freeze-thaw cycles.
Precautions	SLIT3 antibody - N-terminal region is for research use only and not for use in diagnostic or therapeutic procedures.

Protein Information

Name	SLIT3
Synonyms	KIAA0814, MEGF5, SLIL2
Function	May act as molecular guidance cue in cellular migration, and function may be mediated by interaction with roundabout homolog receptors.
Cellular Location	Secreted.
Tissue Location	Predominantly expressed in thyroid.

References

Itoh A.,et al.Brain Res. Mol. Brain Res. 62:175-186(1998).

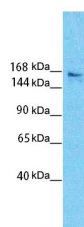
Nakayama M.,et al.Genomics 51:27-34(1998).

Nakayama M.,et al.Submitted (FEB-2005) to the EMBL/GenBank/DDBJ databases.

Clark H.F.,et al.Genome Res. 13:2265-2270(2003).

Schmutz J.,et al.Nature 431:268-274(2004).

Images



Host: Rabbit

Target Name: SLIT3

Sample Tissue: Jurkat Cell lysates

Antibody Dilution: 1.0µg/ml

Please note: All products are 'FOR RESEARCH USE ONLY. NOT FOR USE IN DIAGNOSTIC OR THERAPEUTIC PROCEDURES'.