

Cxxc5 Antibody - N-terminal region

Rabbit Polyclonal Antibody

Catalog # AI14325

Product Information

Application	WB
Primary Accession	Q91WA4
Other Accession	NM_133687 , NP_598448
Reactivity	Human, Mouse, Rat, Guinea Pig, Horse
Predicted	Human, Mouse, Rat, Pig, Guinea Pig, Horse
Host	Rabbit
Clonality	Polyclonal
Calculated MW	32812

Additional Information

Gene ID	67393
Alias Symbol	4930415K17Rik
Other Names	CXXC-type zinc finger protein 5, Cxxc5
Format	Liquid. Purified antibody supplied in 1x PBS buffer with 0.09% (w/v) sodium azide and 2% sucrose.
Reconstitution & Storage	Add 50 ul of distilled water. Final anti-Cxxc5 antibody concentration is 1 mg/ml in PBS buffer with 2% sucrose. For longer periods of storage, store at 20°C. Avoid repeat freeze-thaw cycles.
Precautions	Cxxc5 Antibody - N-terminal region is for research use only and not for use in diagnostic or therapeutic procedures.

Protein Information

Name	Cxxc5
Function	May indirectly participate in activation of the NF-kappa-B and MAPK pathways. Acts as a mediator of BMP4-mediated modulation of canonical Wnt signaling activity in neural stem cells. Required for DNA damage-induced ATM phosphorylation, p53 activation and cell cycle arrest. Involved in myelopoiesis (By similarity). Binds to the oxygen responsive element of COX4I2 and represses its transcription under hypoxia conditions (4% oxygen), as well as normoxia conditions (20% oxygen). May repress COX4I2 transactivation induced by CHCHD2 and RBPJ (By similarity). Binds preferentially to DNA containing cytidine- phosphate-guanosine (CpG) dinucleotides over CpH (H=A, T, and C), hemimethylated-CpG and hemimethylated-hydroxymethyl-CpG (By similarity).

Cellular Location

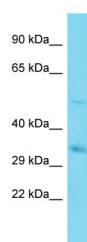
Nucleus {ECO:0000250|UniProtKB:Q5XIQ3}. Cytoplasm {ECO:0000250|UniProtKB:Q5XIQ3}. Note=Colocalizes with DVL1 in large bodies localized just outside the nuclear membrane {ECO:0000250|UniProtKB:Q5XIQ3}

References

Carninci P.,et al.Science 309:1559-1563(2005).

Andersson T.,et al.J. Biol. Chem. 284:3672-3681(2009).

Images



Host: Rabbit

Target Name: Cxxc5

Sample Tissue: Mouse Heart lysates

Antibody Dilution: 1.0µg/ml

Please note: All products are 'FOR RESEARCH USE ONLY. NOT FOR USE IN DIAGNOSTIC OR THERAPEUTIC PROCEDURES'.