

# Thap11 antibody - C-terminal region

Rabbit Polyclonal Antibody

Catalog # AI14327

## Product Information

<b>Application</b>	WB
<b>Primary Accession</b>	<a href="#">Q9JJD0</a>
<b>Other Accession</b>	<a href="#">NM_021513</a> , <a href="#">NP_067488</a>
<b>Reactivity</b>	Human, Mouse, Rat, Rabbit, Pig, Dog, Guinea Pig, Horse, Bovine
<b>Predicted</b>	Human, Rat, Rabbit, Pig, Dog, Guinea Pig, Horse
<b>Host</b>	Rabbit
<b>Clonality</b>	Polyclonal
<b>Calculated MW</b>	33276

## Additional Information

<b>Gene ID</b>	59016
<b>Alias Symbol</b> <b>Other Names</b>	2810036E22Rik, AB041579, CTG-B43a, CTG-B45d, Ronin THAP domain-containing protein 11, Ronin, Thap11
<b>Format</b>	Liquid. Purified antibody supplied in 1x PBS buffer with 0.09% (w/v) sodium azide and 2% sucrose.
<b>Reconstitution &amp; Storage</b>	Add 50 ul of distilled water. Final anti-Thap11 antibody concentration is 1 mg/ml in PBS buffer with 2% sucrose. For longer periods of storage, store at 20°C. Avoid repeat freeze-thaw cycles.
<b>Precautions</b>	Thap11 antibody - C-terminal region is for research use only and not for use in diagnostic or therapeutic procedures.

## Protein Information

<b>Name</b>	Thap11
<b>Function</b>	Transcriptional repressor that plays a central role for embryogenesis and the pluripotency of embryonic stem (ES) cells. Sequence-specific DNA-binding factor that represses gene expression in pluripotent ES cells by directly binding to key genetic loci and recruiting epigenetic modifiers (PubMed: <a href="#">18585351</a> ). Required for normal brain development and neural precursor differentiation (By similarity).
<b>Cellular Location</b>	Nucleus. Cytoplasm Note=In oocytes, detected in the ooplasm, without evidence of its presence in the nucleus. Found in the nucleus of undifferentiated embryonic stem cells (PubMed:18585351). Evenly distributed between nucleus and cytoplasm in skin fibroblasts (By similarity)

{ECO:0000250|UniProtKB:Q96EK4, ECO:0000269|PubMed:18585351}

## Tissue Location

Mainly expressed in embryonic pluripotent cells (PubMed:18585351). In adult tissues, expressed in oocytes and in certain regions of the brain, including hippocampus, olfactory bulb and Purkinje cells (PubMed:18585351).

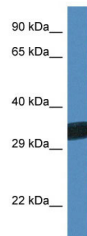
## References

---

Osada N., et al. Submitted (APR-2000) to the EMBL/GenBank/DDBJ databases.  
Carninci P., et al. Science 309:1559-1563(2005).  
Mural R.J., et al. Submitted (JUL-2005) to the EMBL/GenBank/DDBJ databases.  
Dejosez M., et al. Cell 133:1162-1174(2008).  
Dejosez M., et al. Cell 134:692-692(2008).

## Images

---



WB Suggested Anti-Thap11 Antibody Titration: 1.0 µg/ml  
Positive Control: Mouse Pancreas

Please note: All products are 'FOR RESEARCH USE ONLY. NOT FOR USE IN DIAGNOSTIC OR THERAPEUTIC PROCEDURES'.