

# Eif2c3 antibody - N-terminal region

Rabbit Polyclonal Antibody

Catalog # AI14328

## Product Information

Application	WB
Primary Accession	<a href="#">Q8CJF9</a>
Other Accession	<a href="#">NM_153402</a> , <a href="#">NP_700451</a>
Reactivity	Human, Mouse, Rat, Rabbit, Zebrafish, Pig, Dog, Guinea Pig, Horse, Bovine
Predicted	Human, Mouse, Rat, Rabbit, Pig, Chicken, Dog, Horse
Host	Rabbit
Clonality	Polyclonal
Calculated MW	97277

## Additional Information

Gene ID	214150
Alias Symbol	AW048688, Ago3, C130014L07Rik, Eif2c3
Other Names	Protein argonaute-3 {ECO:0000255 HAMAP-Rule:MF_03032}, Argonaute3 {ECO:0000255 HAMAP-Rule:MF_03032}, mAgo3, Argonaute RISC catalytic component 3, Eukaryotic translation initiation factor 2C 3 {ECO:0000255 HAMAP-Rule:MF_03032}, eIF-2C 3 {ECO:0000255 HAMAP-Rule:MF_03032}, eIF2C 3 {ECO:0000255 HAMAP-Rule:MF_03032}, Piwi/argonaute family protein meIF2C3, Ago3, Eif2c3
Format	Liquid. Purified antibody supplied in 1x PBS buffer with 0.09% (w/v) sodium azide and 2% sucrose.
Reconstitution & Storage	Add 50 ul of distilled water. Final anti-Eif2c3 antibody concentration is 1 mg/ml in PBS buffer with 2% sucrose. For longer periods of storage, store at 20°C. Avoid repeat freeze-thaw cycles.
Precautions	Eif2c3 antibody - N-terminal region is for research use only and not for use in diagnostic or therapeutic procedures.

## Protein Information

Name	Ago3
Synonyms	Eif2c3
Function	Required for RNA-mediated gene silencing (RNAi). Binds to short RNAs such as microRNAs (miRNAs) and represses the translation of mRNAs which are complementary to them. Proposed to be involved in stabilization of small RNA

derivates (siRNA) derived from processed RNA polymerase III-transcribed Alu repeats containing a DR2 retinoic acid response element (RARE) in stem cells and in the subsequent siRNA- dependent degradation of a subset of RNA polymerase II-transcribed coding mRNAs by recruiting a mRNA decapping complex involving EDC4 (PubMed:[19174539](#)). Possesses RNA slicer activity but only on select RNAs bearing 5'- and 3'-flanking sequences to the region of guide- target complementarity (By similarity).

#### Cellular Location

Cytoplasm, P-body {ECO:0000255 | HAMAP- Rule:MF\_03032}

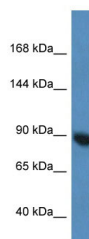
## References

---

Doi N.,et al.Curr. Biol. 13:41-46(2003).  
Carninci P.,et al.Science 309:1559-1563(2005).  
Church D.M.,et al.PLoS Biol. 7:E1000112-E1000112(2009).  
Mural R.J.,et al.Submitted (SEP-2005) to the EMBL/GenBank/DDBJ databases.  
Su H.,et al.Genes Dev. 23:304-317(2009).

## Images

---



WB Suggested Anti-Eif2c3 Antibody Titration: 1.0 µg/ml  
Positive Control: Mouse Pancreas

Please note: All products are 'FOR RESEARCH USE ONLY. NOT FOR USE IN DIAGNOSTIC OR THERAPEUTIC PROCEDURES'.