

Wnt3a antibody - C-terminal region

Rabbit Polyclonal Antibody

Catalog # AI14329

Product Information

Application	WB, IHC
Primary Accession	P27467
Other Accession	NM_009522 , NP_033548
Reactivity	Human, Mouse, Rat, Rabbit, Zebrafish, Pig, Dog, Guinea Pig, Horse, Bovine
Predicted	Human, Mouse, Rat, Rabbit, Dog, Guinea Pig, Horse
Host	Rabbit
Clonality	Polyclonal
Calculated MW	39258

Additional Information

Gene ID	22416
Alias Symbol	vt, Wnt-3a
Other Names	Protein Wnt-3a, Wnt3a, Wnt-3a
Format	Liquid. Purified antibody supplied in 1x PBS buffer with 0.09% (w/v) sodium azide and 2% sucrose.
Reconstitution & Storage	Add 50 ul of distilled water. Final anti-Wnt3a antibody concentration is 1 mg/ml in PBS buffer with 2% sucrose. For longer periods of storage, store at 20°C. Avoid repeat freeze-thaw cycles.
Precautions	Wnt3a antibody - C-terminal region is for research use only and not for use in diagnostic or therapeutic procedures.

Protein Information

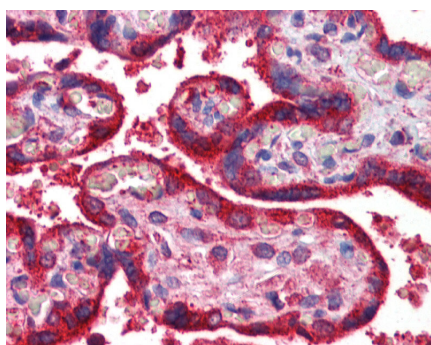
Name	Wnt3a
Synonyms	Wnt-3a
Function	Ligand for members of the frizzled family of seven transmembrane receptors (Probable). Functions in the canonical Wnt signaling pathway that results in activation of transcription factors of the TCF/LEF family (PubMed: 26902720). Required for normal embryonic mesoderm development and formation of caudal somites (PubMed: 8299937). Required for normal morphogenesis of the developing neural tube (PubMed: 8299937). Mediates self-renewal of the stem cells at the bottom of intestinal crypts (in vitro) (PubMed: 26902720).

Cellular Location	Secreted, extracellular space, extracellular matrix. Secreted
Tissue Location	Dorsal portion of the neural tube (developing roof plate), and mesenchyme tissue surrounding the umbilical veins

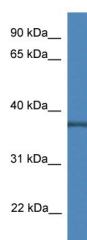
References

Roelink H.,et al.Genes Dev. 5:381-388(1991).
Tanaka K.,et al.Eur. J. Biochem. 267:4300-4311(2000).
Willert K.,et al.Nature 423:448-452(2003).
Zhang X.,et al.Cell 149:1565-1577(2012).

Images



Immunohistochemistry with Placenta tissue at an antibody concentration of Dilution: 1:500 using anti-Wnt3a antibody (AI14329)



WB Suggested Anti-Wnt3a Antibody Titration: 1 µg/ml
Positive Control: Mouse Heart lysate

Please note: All products are 'FOR RESEARCH USE ONLY. NOT FOR USE IN DIAGNOSTIC OR THERAPEUTIC PROCEDURES'.