

# NCF4 antibody - C-terminal region

Rabbit Polyclonal Antibody

Catalog # AI14338

## Product Information

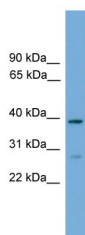
Application	WB
Primary Accession	<a href="#">A8K4F9</a>
Other Accession	<a href="#">NM_013416</a> , <a href="#">NP_038202</a>
Reactivity	Human
Predicted	Human
Host	Rabbit
Clonality	Polyclonal
Calculated MW	39 kDa

## Additional Information

Alias Symbol	MGC3810, NCF, P40PHOX, SH3PXD4
Format	Liquid. Purified antibody supplied in 1x PBS buffer with 0.09% (w/v) sodium azide and 2% sucrose.
Reconstitution & Storage	Add 50 ul of distilled water. Final anti-NCF4 antibody concentration is 1 mg/ml in PBS buffer with 2% sucrose. For longer periods of storage, store at 20°C. Avoid repeat freeze-thaw cycles.
Precautions	NCF4 antibody - C-terminal region is for research use only and not for use in diagnostic or therapeutic procedures.

## Protein Information

## Images



WB Suggested Anti-NCF4 Antibody Titration: 0.2-1 µg/ml  
ELISA Titer: 1:1562500  
Positive Control: Human Muscle