

BBC3 antibody - N-terminal region

Rabbit Polyclonal Antibody
Catalog # AI14343

Product Information

Application	WB
Primary Accession	Q96PG8
Other Accession	NM_001127240 , NP_001120712
Reactivity	Human
Predicted	Human
Host	Rabbit
Clonality	Polyclonal
Calculated MW	26498

Additional Information

Gene ID	27113
Alias Symbol Other Names	FLJ42994, JFY1, PUMA, JFY-1 Bcl-2-binding component 3, JFY-1, p53 up-regulated modulator of apoptosis, BBC3, PUMA
Format	Liquid. Purified antibody supplied in 1x PBS buffer with 0.09% (w/v) sodium azide and 2% sucrose.
Reconstitution & Storage	Add 50 ul of distilled water. Final anti-BBC3 antibody concentration is 1 mg/ml in PBS buffer with 2% sucrose. For longer periods of storage, store at 20°C. Avoid repeat freeze-thaw cycles.
Precautions	BBC3 antibody - N-terminal region is for research use only and not for use in diagnostic or therapeutic procedures.

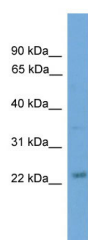
Protein Information

Name	BBC3
Synonyms	PUMA
Function	[Isoform 3]: Does not affect cell growth.
Cellular Location	Note=Contrary to isoforms 1 and 2, isoform 3 does not localize to the mitochondria

References

Nakano K.,et al.Mol. Cell 7:683-694(2001).
Grimwood J.,et al.Nature 428:529-535(2004).
Mural R.J.,et al.Submitted (JUL-2005) to the EMBL/GenBank/DDBJ databases.

Images



WB Suggested Anti-BBC3 Antibody Titration: 0.2-1 $\mu\text{g/ml}$
ELISA Titer: 1:1562500
Positive Control: Human Placenta

Please note: All products are 'FOR RESEARCH USE ONLY. NOT FOR USE IN DIAGNOSTIC OR THERAPEUTIC PROCEDURES'.