

Casp2 Antibody - middle region

Rabbit Polyclonal Antibody

Catalog # AI14347

Product Information

Application	WB
Primary Accession	P29594
Other Accession	NM_007610 , NP_031636
Reactivity	Human, Mouse, Rat, Rabbit, Pig, Dog, Guinea Pig, Horse, Bovine
Predicted	Human, Mouse, Rat, Rabbit, Pig, Dog, Guinea Pig, Horse, Bovine
Host	Rabbit
Clonality	Polyclonal
Calculated MW	50661

Additional Information

Gene ID	12366
Alias Symbol	Caspase-2, ICH-1, Nedd2
Other Names	Caspase-2, CASP-2, 3.4.22.55, Neural precursor cell expressed developmentally down-regulated protein 2, NEDD-2, Protease ICH-1, Caspase-2 subunit p18, Caspase-2 subunit p13, Caspase-2 subunit p12, Casp2, Ich1, Nedd-2, Nedd2
Format	Liquid. Purified antibody supplied in 1x PBS buffer with 0.09% (w/v) sodium azide and 2% sucrose.
Reconstitution & Storage	Add 50 ul of distilled water. Final anti-Casp2 antibody concentration is 1 mg/ml in PBS buffer with 2% sucrose. For longer periods of storage, store at 20°C. Avoid repeat freeze-thaw cycles.
Precautions	Casp2 Antibody - middle region is for research use only and not for use in diagnostic or therapeutic procedures.

Protein Information

Name	Casp2
Synonyms	Ich1, Nedd-2, Nedd2
Function	Involved in the activation cascade of caspases responsible for apoptosis execution. Might function by either activating some proteins required for cell death or inactivating proteins necessary for cell survival (PubMed: 7958843). Associates with PIDD1 and CRADD to form the PIDDosome, a complex that activates CASP2 and triggers apoptosis in response to genotoxic stress (By similarity).

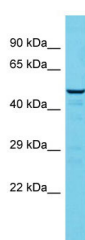
Tissue Location

High level expression seen in the embryonic CNS, liver, lung, kidney, small intestine, and hair follicles of vibrissae Moderate expression seen in the skin, oral mucosa, skeletal muscle, submandibular gland and thymus. In the adult, it is highly expressed in spleen, lung and kidney. Moderately in the brain, heart, testis, liver Low levels in the thymus, skeletal muscle, ovary and gut

References

Kumar S.,et al.Genes Dev. 8:1613-1626(1994).
van de Craen M.,et al.FEBS Lett. 403:61-69(1997).
Carninci P.,et al.Science 309:1559-1563(2005).
Kumar S.,et al.Biochem. Biophys. Res. Commun. 185:1155-1161(1992).

Images



Host: Rabbit
Target Name: Casp2
Sample Tissue: Mouse Testis lysates
Antibody Dilution: 1.0µg/ml

Please note: All products are 'FOR RESEARCH USE ONLY. NOT FOR USE IN DIAGNOSTIC OR THERAPEUTIC PROCEDURES'.