

Nfatc2 antibody - N-terminal region

Rabbit Polyclonal Antibody

Catalog # AI14357

Product Information

Application	WB
Primary Accession	Q60591
Other Accession	NM_001037178 , NP_001032255
Reactivity	Human, Mouse, Rat, Rabbit, Pig, Dog, Guinea Pig, Horse, Bovine
Predicted	Human, Mouse, Rat, Rabbit, Pig, Dog, Guinea Pig, Horse, Bovine
Host	Rabbit
Clonality	Polyclonal
Calculated MW	100020

Additional Information

Gene ID	18019
Alias Symbol	AI607462, NFAT1, NFAT1-D, Nfatp, NF-ATc2
Other Names	Nuclear factor of activated T-cells, cytoplasmic 2, NF-ATc2, NFATc2, NFAT pre-existing subunit, NF-ATp, T-cell transcription factor NFAT1, Nfatc2, Nfat1, Nfatp
Format	Liquid. Purified antibody supplied in 1x PBS buffer with 0.09% (w/v) sodium azide and 2% sucrose.
Reconstitution & Storage	Add 50 ul of distilled water. Final anti-Nfatc2 antibody concentration is 1 mg/ml in PBS buffer with 2% sucrose. For longer periods of storage, store at 20°C. Avoid repeat freeze-thaw cycles.
Precautions	Nfatc2 antibody - N-terminal region is for research use only and not for use in diagnostic or therapeutic procedures.

Protein Information

Name	Nfatc2
Synonyms	Nfat1, Nfatp
Function	Plays a role in the inducible expression of cytokine genes in T cells, especially in the induction of the IL-2, IL-3, IL-4, TNF-alpha or GM-CSF. Promotes invasive migration through the activation of GPC6 expression and WNT5A signaling pathway (By similarity). Is involved in the negative regulation of chondrogenesis (PubMed: 10620601). Recruited by AKAP5 to ORAI1 pore-forming subunit of CRAC channels in Ca(2+) signaling microdomains where store-operated Ca(2+) influx is coupled to calmodulin and calcineurin

signaling and activation of NFAT-dependent transcriptional responses.

Cellular Location

Cytoplasm. Nucleus. Note=Cytoplasmic for the phosphorylated form and nuclear after activation that is controlled by calcineurin- mediated dephosphorylation. Rapid nuclear exit of NFATC is thought to be one mechanism by which cells distinguish between sustained and transient calcium signals. The subcellular localization of NFATC plays a key role in the regulation of gene transcription

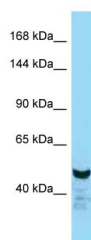
Tissue Location

Expressed in spleen, heart, testis, brain, placenta, muscle and pancreas (PubMed:18675896). Expressed in the thymus (PubMed:17579027, PubMed:18675896). Expressed in the lung (PubMed:17579027). Expressed in cartilage (PubMed:10620601)

References

McCaffrey P.G.,et al.Science 262:750-754(1993).
Luo C.,et al.Mol. Cell. Biol. 16:3955-3966(1996).
Plyte S.,et al.J. Biol. Chem. 276:14350-14358(2001).
Vihma H.,et al.Genomics 92:279-291(2008).
Church D.M.,et al.PLoS Biol. 7:E1000112-E1000112(2009).

Images



WB Suggested Anti-Nfatc2 Antibody Titration: 1.0 µg/ml
Positive Control: Mouse Liver

Please note: All products are 'FOR RESEARCH USE ONLY. NOT FOR USE IN DIAGNOSTIC OR THERAPEUTIC PROCEDURES'.