

# PSMF1 antibody - middle region

Rabbit Polyclonal Antibody

Catalog # AI14362

## Product Information

---

<b>Application</b>	WB
<b>Primary Accession</b>	<a href="#">Q92530</a>
<b>Other Accession</b>	<a href="#">NM_006814</a> , <a href="#">NP_006805</a>
<b>Reactivity</b>	Human, Mouse, Rat, Rabbit, Dog, Guinea Pig, Horse, Bovine
<b>Predicted</b>	Human, Mouse, Rat, Pig, Chicken, Dog, Bovine
<b>Host</b>	Rabbit
<b>Clonality</b>	Polyclonal
<b>Calculated MW</b>	29817

## Additional Information

---

<b>Gene ID</b>	9491
<b>Alias Symbol</b>	PI31
<b>Other Names</b>	Proteasome inhibitor PI31 subunit, hPI31, PSMF1
<b>Format</b>	Liquid. Purified antibody supplied in 1x PBS buffer with 0.09% (w/v) sodium azide and 2% sucrose.
<b>Reconstitution &amp; Storage</b>	Add 50 ul of distilled water. Final anti-PSMF1 antibody concentration is 1 mg/ml in PBS buffer with 2% sucrose. For longer periods of storage, store at 20°C. Avoid repeat freeze-thaw cycles.
<b>Precautions</b>	PSMF1 antibody - middle region is for research use only and not for use in diagnostic or therapeutic procedures.

## Protein Information

---

<b>Name</b>	PSMF1
<b>Function</b>	Plays an important role in control of proteasome function. Inhibits the hydrolysis of protein and peptide substrates by the 20S proteasome. Also inhibits the activation of the proteasome by the proteasome regulatory proteins PA700 and PA28.
<b>Cellular Location</b>	Cytoplasm. Endoplasmic reticulum

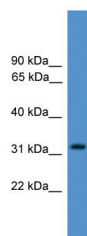
## References

---

McCutchen-Maloney S.L.,et al.J. Biol. Chem. 275:18557-18565(2000).  
Deloukas P.,et al.Nature 414:865-871(2001).  
Mural R.J.,et al.Submitted (SEP-2005) to the EMBL/GenBank/DDBJ databases.  
Dephoure N.,et al.Proc. Natl. Acad. Sci. U.S.A. 105:10762-10767(2008).  
Mayya V.,et al.Sci. Signal. 2:RA46-RA46(2009).

## Images

---



WB Suggested Anti-PSMF1 Antibody Titration: 0.2-1 µg/ml  
ELISA Titer: 1:62500  
Positive Control: Jurkat cell lysate

Please note: All products are 'FOR RESEARCH USE ONLY. NOT FOR USE IN DIAGNOSTIC OR THERAPEUTIC PROCEDURES'.