

Reck antibody - middle region

Rabbit Polyclonal Antibody

Catalog # AI14370

Product Information

Application	WB
Primary Accession	Q9Z0J1
Other Accession	NM_016678 , NP_057887
Reactivity	Human, Mouse, Rat, Rabbit, Pig, Dog, Guinea Pig, Horse, Bovine
Predicted	Human, Mouse, Rat, Rabbit, Pig, Dog, Guinea Pig, Horse, Bovine
Host	Rabbit
Clonality	Polyclonal
Calculated MW	106082

Additional Information

Gene ID	53614
Alias Symbol	MGC169689, St15, mRECK
Other Names	Reversion-inducing cysteine-rich protein with Kazal motifs, mRECK, Reck
Format	Liquid. Purified antibody supplied in 1x PBS buffer with 0.09% (w/v) sodium azide and 2% sucrose.
Reconstitution & Storage	Add 50 ul of distilled water. Final anti-Reck antibody concentration is 1 mg/ml in PBS buffer with 2% sucrose. For longer periods of storage, store at 20°C. Avoid repeat freeze-thaw cycles.
Precautions	Reck antibody - middle region is for research use only and not for use in diagnostic or therapeutic procedures.

Protein Information

Name	Reck {ECO:0000303 PubMed:9789069, ECO:0000312 MGI:MGI:1855698}
Function	Functions together with ADGRA2 to enable brain endothelial cells to selectively respond to Wnt7 signals (WNT7A or WNT7B) (PubMed: 28803732). Plays a key role in Wnt7-specific responses: required for central nervous system (CNS) angiogenesis and blood-brain barrier regulation (PubMed: 26658478 , PubMed: 28803732). Acts as a Wnt7- specific coactivator of canonical Wnt signaling by decoding Wnt ligands: acts by interacting specifically with the disordered linker region of Wnt7, thereby conferring ligand selectivity for Wnt7 (By similarity). ADGRA2 is then required to deliver RECK-bound Wnt7 to frizzled by assembling a higher-order RECK-ADGRA2-Fzd-LRP5-LRP6 complex (By similarity). Also acts as a serine protease inhibitor: negatively regulates matrix metalloproteinase-9 (MMP9) by

suppressing MMP9 secretion and by direct inhibition of its enzymatic activity (PubMed:[11747814](#)). Also inhibits metalloproteinase activity of MMP2 and MMP14 (MT1-MMP) (PubMed:[11747814](#)).

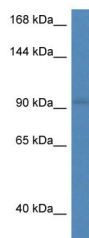
Cellular Location

Cell membrane; Lipid-anchor, GPI-anchor {ECO:0000250 | UniProtKB:O95980}

References

Takahashi C.,et al.Proc. Natl. Acad. Sci. U.S.A. 95:13221-13226(1998).
Church D.M.,et al.PLoS Biol. 7:E1000112-E1000112(2009).

Images



WB Suggested Anti-Reck Antibody Titration: 1.0 µg/ml
Positive Control: Mouse Spleen

Please note: All products are 'FOR RESEARCH USE ONLY. NOT FOR USE IN DIAGNOSTIC OR THERAPEUTIC PROCEDURES'.