

SERPINB6 antibody - middle region

Rabbit Polyclonal Antibody

Catalog # AI14372

Product Information

Application	WB
Primary Accession	P35237
Other Accession	NM_004568 , NP_004559
Reactivity	Human, Bovine
Predicted	Human, Bovine
Host	Rabbit
Clonality	Polyclonal
Calculated MW	42622

Additional Information

Gene ID	5269
Alias Symbol Other Names	CAP, DKFZp686I04222, MGC111370, MSTP057, PI6, PTI, SPI3, DFNB91 Serpine B6, Cytoplasmic antiproteinase, CAP, Peptidase inhibitor 6, PI-6, Placental thrombin inhibitor, SERPINB6, PI6, PTI
Format	Liquid. Purified antibody supplied in 1x PBS buffer with 0.09% (w/v) sodium azide and 2% sucrose.
Reconstitution & Storage	Add 50 ul of distilled water. Final anti-SERPINB6 antibody concentration is 1 mg/ml in PBS buffer with 2% sucrose. For longer periods of storage, store at 20°C. Avoid repeat freeze-thaw cycles.
Precautions	SERPINB6 antibody - middle region is for research use only and not for use in diagnostic or therapeutic procedures.

Protein Information

Name	SERPINB6
Synonyms	PI6, PTI
Function	May be involved in the regulation of serine proteinases present in the brain or extravasated from the blood (By similarity). Inhibitor of cathepsin G, kallikrein-8 and thrombin. May play an important role in the inner ear in the protection against leakage of lysosomal content during stress and loss of this protection results in cell death and sensorineural hearing loss.
Cellular Location	Cytoplasm

Tissue Location

Expressed in keratinocytes (at protein level). Highest levels in skeletal muscle. Also found in placenta, cardiac muscle, lung, liver, kidney and pancreas. Expressed in the inner ear hair cells. Expressed abundantly by normal mast cells in different tissues and by mast cells in mastocytoma lesions

References

Coughlin P.,et al.Proc. Natl. Acad. Sci. U.S.A. 90:9417-9421(1993).

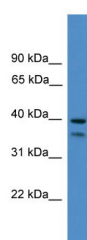
Morgenstern K.A.,et al.Biochemistry 33:3432-3441(1994).

Ota T.,et al.Nat. Genet. 36:40-45(2004).

Bechtel S.,et al.BMC Genomics 8:399-399(2007).

Mungall A.J.,et al.Nature 425:805-811(2003).

Images



WB Suggested Anti-SERPINB6 Antibody Titration: 0.2-1
µg/ml
ELISA Titer: 1:312500
Positive Control: Human Placenta

Please note: All products are 'FOR RESEARCH USE ONLY. NOT FOR USE IN DIAGNOSTIC OR THERAPEUTIC PROCEDURES'.