

Arhgef4 Antibody - N-terminal region

Rabbit Polyclonal Antibody

Catalog # AI14374

Product Information

| | |
|--------------------------|--|
| Application | WB |
| Primary Accession | Q7TNR9 |
| Other Accession | NM_183019 , NP_898840 |
| Reactivity | Human, Mouse, Rat, Rabbit, Dog, Guinea Pig, Horse, Bovine |
| Predicted | Human, Mouse, Rat, Rabbit, Pig, Dog, Guinea Pig, Horse, Bovine |
| Host | Rabbit |
| Clonality | Polyclonal |
| Calculated MW | 56679 |

Additional Information

| | |
|-------------------------------------|--|
| Gene ID | 226970 |
| Alias Symbol | 9330140K16Rik, Asef, ENSMUSG00000070955 |
| Other Names | Rho guanine nucleotide exchange factor 4, APC-stimulated guanine nucleotide exchange factor, Asef, Arhgef4, Kiaa1112 |
| Format | Liquid. Purified antibody supplied in 1x PBS buffer with 0.09% (w/v) sodium azide and 2% sucrose. |
| Reconstitution & Storage | Add 50 ul of distilled water. Final anti-Arhgef4 antibody concentration is 1 mg/ml in PBS buffer with 2% sucrose. For longer periods of storage, store at 20°C. Avoid repeat freeze-thaw cycles. |
| Precautions | Arhgef4 Antibody - N-terminal region is for research use only and not for use in diagnostic or therapeutic procedures. |

Protein Information

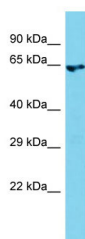
| | |
|-----------------|---|
| Name | Arhgef4 |
| Synonyms | Kiaa1112 |
| Function | Acts as a guanine nucleotide exchange factor (GEF) for RHOA, RAC1 and CDC42 GTPases. Binding of APC may activate RAC1 GEF activity. The APC-ARHGEF4 complex seems to be involved in cell migration as well as in E-cadherin-mediated cell-cell adhesion (By similarity). Required for MMP9 up-regulation via the JNK signaling pathway in colorectal tumor cells. Involved in tumor angiogenesis and may play a role in intestinal adenoma formation and tumor progression. |

| | |
|--------------------------|--|
| Cellular Location | Cytoplasm. Note=Colocalized with APC in the synapse of olfactory glomerulus |
| Tissue Location | Expressed in colon epithelial cells. Highly expressed in CNS, including hippocampus, olfactory bulb and cerebellum Expression is aberrantly enhanced in most colorectal tumors |

References

Church D.M.,et al.PLoS Biol. 7:E1000112-E1000112(2009).
Okazaki N.,et al.DNA Res. 10:35-48(2003).
Okazaki N.,et al.Submitted (JUN-2004) to the EMBL/GenBank/DDBJ databases.
Kawasaki Y.,et al.Science 289:1194-1197(2000).
Kawasaki Y.,et al.EMBO Rep. 10:1355-1362(2009).

Images



Host: Rabbit
Target Name: Arhgef4
Sample Tissue: Mouse Testis lysates
Antibody Dilution: 1.0µg/ml

Please note: All products are 'FOR RESEARCH USE ONLY. NOT FOR USE IN DIAGNOSTIC OR THERAPEUTIC PROCEDURES'.