

Anapc7 Antibody - C-terminal region

Rabbit Polyclonal Antibody

Catalog # AI14375

Product Information

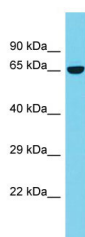
Application	WB
Primary Accession	D3ZIT4
Other Accession	NM_001107142 , NP_001100612
Reactivity	Human, Mouse, Rat, Rabbit, Zebrafish, Dog, Guinea Pig, Horse
Predicted	Human, Mouse, Rat, Rabbit, Zebrafish, Pig, Dog, Guinea Pig, Horse
Host	Rabbit
Clonality	Polyclonal
Calculated MW	62 kDa

Additional Information

Format	Liquid. Purified antibody supplied in 1x PBS buffer with 0.09% (w/v) sodium azide and 2% sucrose.
Reconstitution & Storage	Add 50 ul of distilled water. Final anti-Anapc7 antibody concentration is 1 mg/ml in PBS buffer with 2% sucrose. For longer periods of storage, store at 20°C. Avoid repeat freeze-thaw cycles.
Precautions	Anapc7 Antibody - C-terminal region is for research use only and not for use in diagnostic or therapeutic procedures.

Protein Information

Images



Host: Rabbit
Target Name: Anapc7
Sample Tissue: Rat Stomach lysates
Antibody Dilution: 1.0µg/ml

Please note: All products are 'FOR RESEARCH USE ONLY. NOT FOR USE IN DIAGNOSTIC OR THERAPEUTIC PROCEDURES'.