

Ubxn6 antibody - middle region

Rabbit Polyclonal Antibody

Catalog # AI14378

Product Information

Application	WB
Primary Accession	Q99PL6
Other Accession	NM_024432 , NP_077752
Reactivity	Human, Mouse, Rat, Zebrafish, Pig, Dog, Guinea Pig, Horse, Bovine, Yeast
Predicted	Human, Mouse, Zebrafish, Chicken, Dog, Guinea Pig, Horse, Bovine
Host	Rabbit
Clonality	Polyclonal
Calculated MW	49796

Additional Information

Gene ID	66530
Alias Symbol Other Names	1200008L11Rik, 2210415J11Rik, AU040909, Ubxd1, Ubxdc2 UBX domain-containing protein 6, UBX domain-containing protein 1, Ubxn6, Ubxd1, Ubxdc2
Format	Liquid. Purified antibody supplied in 1x PBS buffer with 0.09% (w/v) sodium azide and 2% sucrose.
Reconstitution & Storage	Add 50 ul of distilled water. Final anti-Ubxn6 antibody concentration is 1 mg/ml in PBS buffer with 2% sucrose. For longer periods of storage, store at 20°C. Avoid repeat freeze-thaw cycles.
Precautions	Ubxn6 antibody - middle region is for research use only and not for use in diagnostic or therapeutic procedures.

Protein Information

Name	Ubxn6 {ECO:0000312 MGI:MGI:1913780}
Function	May negatively regulate the ATPase activity of VCP, an ATP- driven segregase that associates with different cofactors to control a wide variety of cellular processes. As a cofactor of VCP, it may play a role in the transport of CAV1 to lysosomes for degradation. It may also play a role in endoplasmic reticulum-associated degradation (ERAD) of misfolded proteins. Together with VCP and other cofactors, it may play a role in macroautophagy, regulating for instance the clearance of damaged lysosomes.
Cellular Location	Cytoplasm {ECO:0000250 UniProtKB:Q9BZV1}. Cytoplasm, cytosol {ECO:0000250 UniProtKB:Q9BZV1}. Membrane

{ECO:0000250|UniProtKB:Q9BZV1}; Peripheral membrane protein
{ECO:0000250|UniProtKB:Q9BZV1}. Nucleus
{ECO:0000250|UniProtKB:Q9BZV1} Cytoplasm, cytoskeleton, microtubule
organizing center, centrosome {ECO:0000250|UniProtKB:Q9BZV1}. Early
endosome membrane {ECO:0000250|UniProtKB:Q9BZV1}; Peripheral
membrane protein {ECO:0000250|UniProtKB:Q9BZV1}. Late endosome
membrane {ECO:0000250|UniProtKB:Q9BZV1}; Peripheral membrane protein
{ECO:0000250|UniProtKB:Q9BZV1}. Lysosome membrane
{ECO:0000250|UniProtKB:Q9BZV1}; Peripheral membrane protein
{ECO:0000250|UniProtKB:Q9BZV1}. Note=Localizes at the centrosome both in
interphase and during mitosis. May be recruited to endosomal and lysosomal
membranes as part of a ternary complex with CAV1 and VCP Recruited to
damaged lysosomes decorated with K48-linked ubiquitin chains.
{ECO:0000250|UniProtKB:Q9BZV1}

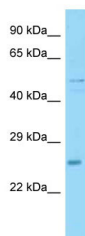
Tissue Location

Widely expressed (at protein level). Highest expression in brain (at protein level).

References

Carim-Todd L.,et al.Biochim. Biophys. Acta 1517:298-301(2001).
Carninci P.,et al.Science 309:1559-1563(2005).
Mural R.J.,et al.Submitted (JUL-2005) to the EMBL/GenBank/DBJ databases.
Church D.M.,et al.PLoS Biol. 7:E1000112-E1000112(2009).
Madsen L.,et al.Int. J. Biochem. Cell Biol. 40:2927-2942(2008).

Images



WB Suggested Anti-Ubxn6 Antibody Titration: 1.0 µg/ml
Positive Control: Mouse Heart

Please note: All products are 'FOR RESEARCH USE ONLY. NOT FOR USE IN DIAGNOSTIC OR THERAPEUTIC PROCEDURES'.