

Psmd7 Antibody - C-terminal region

Rabbit Polyclonal Antibody

Catalog # AI14386

Product Information

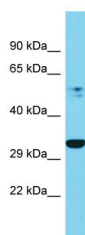
Application	WB
Primary Accession	D4AEH3
Other Accession	NM_001107426 , NP_001100896
Reactivity	Human, Mouse, Rat, Rabbit, Zebrafish, Dog, Guinea Pig, Horse, Bovine, Yeast
Predicted	Human, Mouse, Rat, Rabbit, Zebrafish, Pig, Dog, Guinea Pig, Horse, Bovine, Yeast
Host	Rabbit
Clonality	Polyclonal
Calculated MW	35 KDa

Additional Information

Format	Liquid. Purified antibody supplied in 1x PBS buffer with 0.09% (w/v) sodium azide and 2% sucrose.
Reconstitution & Storage	Add 50 ul of distilled water. Final anti-Psmd7 antibody concentration is 1 mg/ml in PBS buffer with 2% sucrose. For longer periods of storage, store at 20°C. Avoid repeat freeze-thaw cycles.
Precautions	Psmd7 Antibody - C-terminal region is for research use only and not for use in diagnostic or therapeutic procedures.

Protein Information

Images



Host: Rabbit
Target Name: Psmd7
Sample Tissue: Rat Pancreas lysates
Antibody Dilution: 1.0µg/ml