

# MLF1IP Antibody - C-terminal region

Rabbit Polyclonal Antibody  
Catalog # AI14392

## Product Information

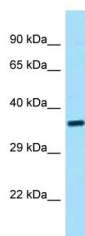
<b>Application</b>	WB
<b>Primary Accession</b>	<a href="#">Q09GN1</a>
<b>Reactivity</b>	Human
<b>Predicted</b>	Human
<b>Host</b>	Rabbit
<b>Clonality</b>	Polyclonal
<b>Calculated MW</b>	35 KDa

## Additional Information

<b>Format</b>	Liquid. Purified antibody supplied in 1x PBS buffer with 0.09% (w/v) sodium azide and 2% sucrose.
<b>Reconstitution &amp; Storage</b>	Add 50 ul of distilled water. Final anti-MLF1IP antibody concentration is 1 mg/ml in PBS buffer with 2% sucrose. For longer periods of storage, store at 20°C. Avoid repeat freeze-thaw cycles.
<b>Precautions</b>	MLF1IP Antibody - C-terminal region is for research use only and not for use in diagnostic or therapeutic procedures.

## Protein Information

## Images



Host: Rabbit  
Target Name: MLF1IP  
Sample Tissue: 721\_B Whole cell lysate  
S  
Antibody Dilution: 1.0µg/ml

Please note: All products are 'FOR RESEARCH USE ONLY. NOT FOR USE IN DIAGNOSTIC OR THERAPEUTIC PROCEDURES'.