

SYT12 antibody - N-terminal region

Rabbit Polyclonal Antibody

Catalog # AI14407

Product Information

Application	WB
Primary Accession	Q8IV01
Other Accession	NM_177963 , NP_808878
Reactivity	Human, Mouse, Rat, Rabbit, Pig, Dog, Guinea Pig, Horse, Bovine
Predicted	Human, Mouse, Rat, Dog, Horse, Bovine
Host	Rabbit
Clonality	Polyclonal
Calculated MW	46537

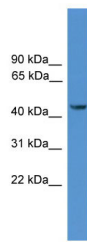
Additional Information

Gene ID	91683
Alias Symbol	SRG1, SYT11, sytXII
Other Names	Synaptotagmin-12, Synaptotagmin XII, SytXII, SYT12
Format	Liquid. Purified antibody supplied in 1x PBS buffer with 0.09% (w/v) sodium azide and 2% sucrose.
Reconstitution & Storage	Add 50 ul of distilled water. Final anti-SYT12 antibody concentration is 1 mg/ml in PBS buffer with 2% sucrose. For longer periods of storage, store at 20°C. Avoid repeat freeze-thaw cycles.
Precautions	SYT12 antibody - N-terminal region is for research use only and not for use in diagnostic or therapeutic procedures.

Protein Information

Name	SYT12
Function	Synaptic vesicle phosphoprotein that enhances spontaneous neurotransmitter release but does not effect induced neurotransmitter release (By similarity). Unlike other synaptotagmins, it does not bind Ca(2+) or phospholipids (By similarity). Essential for mossy-fiber long-term potentiation in the hippocampus (By similarity).
Cellular Location	Cytoplasmic vesicle, secretory vesicle, synaptic vesicle membrane {ECO:0000250 UniProtKB:P97610}; Single-pass membrane protein

Images



WB Suggested Anti-SYT12 Antibody Titration: 1.0 μ g/ml
Positive Control: PANC1 Whole Cell
SYT12 is strongly supported by BioGPS gene expression data to be expressed in Human PANC1 cells

Please note: All products are 'FOR RESEARCH USE ONLY. NOT FOR USE IN DIAGNOSTIC OR THERAPEUTIC PROCEDURES'.