

Rph3a antibody - N-terminal region

Rabbit Polyclonal Antibody

Catalog # AI14408

Product Information

Application	WB
Primary Accession	P47708
Other Accession	NM_011286 , NP_035416
Reactivity	Human, Mouse, Rat, Rabbit, Dog, Guinea Pig, Horse
Predicted	Human, Mouse, Rat, Rabbit, Dog, Guinea Pig, Horse
Host	Rabbit
Clonality	Polyclonal
Calculated MW	75489

Additional Information

Gene ID	19894
Alias Symbol	2900002P20Rik, AU022689, AW108370
Other Names	Rabphilin-3A, Exophilin-1, Rph3a
Format	Liquid. Purified antibody supplied in 1x PBS buffer with 0.09% (w/v) sodium azide and 2% sucrose.
Reconstitution & Storage	Add 50 ul of distilled water. Final anti-Rph3a antibody concentration is 1 mg/ml in PBS buffer with 2% sucrose. For longer periods of storage, store at 20°C. Avoid repeat freeze-thaw cycles.
Precautions	Rph3a antibody - N-terminal region is for research use only and not for use in diagnostic or therapeutic procedures.

Protein Information

Name	Rph3a
Function	Plays an essential role in docking and fusion steps of regulated exocytosis (By similarity). At the presynaptic level, RPH3A is recruited by RAB3A to the synaptic vesicle membrane in a GTP- dependent manner where it modulates synaptic vesicle trafficking and calcium-triggered neurotransmitter release (By similarity). In the post-synaptic compartment, forms a ternary complex with GRIN2A and DLG4 and regulates NMDA receptor stability. Also plays a role in the exocytosis of arginine vasopressin hormone (By similarity).
Cellular Location	Cytoplasmic vesicle, secretory vesicle, synaptic vesicle membrane {ECO:0000250 UniProtKB:P47709}. Cell projection, dendritic spine {ECO:0000250 UniProtKB:P47709}. Postsynaptic cell membrane

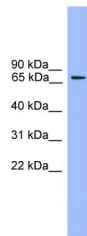
{ECO:0000250|UniProtKB:P47709}. Membrane
{ECO:0000250|UniProtKB:P47709}; Peripheral membrane protein
{ECO:0000250|UniProtKB:P47709}

Tissue Location Specifically expressed in brain.

References

Inagaki N.,et al.Submitted (NOV-2001) to the EMBL/GenBank/DDBJ databases.
Inagaki N.,et al.J. Biochem. 116:239-242(1994).
Fukuda M.,et al.J. Biol. Chem. 278:15373-15380(2003).
Munton R.P.,et al.Mol. Cell. Proteomics 6:283-293(2007).
Coudevylle N.,et al.J. Biol. Chem. 283:35918-35928(2008).

Images



WB Suggested Anti-Rph3a Antibody Titration: 0.2-1 µg/ml
ELISA Titer: 1:1562500
Positive Control: Mouse Muscle

Please note: All products are 'FOR RESEARCH USE ONLY. NOT FOR USE IN DIAGNOSTIC OR THERAPEUTIC PROCEDURES'.