

Snph antibody - N-terminal region

Rabbit Polyclonal Antibody

Catalog # AI14412

Product Information

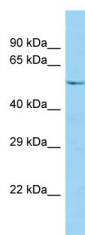
Application	WB
Primary Accession	Q80U23-2
Other Accession	NM_198214 , NP_937857
Reactivity	Human, Mouse, Rat, Rabbit, Dog, Guinea Pig, Horse, Bovine
Predicted	Human, Mouse, Rat, Rabbit, Pig, Dog, Guinea Pig, Horse, Bovine
Host	Rabbit
Clonality	Polyclonal
Calculated MW	57 KDa

Additional Information

Alias Symbol	6430515A01, AW045671, AW556958, AW743098, mKIAA0374
Format	Liquid. Purified antibody supplied in 1x PBS buffer with 0.09% (w/v) sodium azide and 2% sucrose.
Reconstitution & Storage	Add 50 ul of distilled water. Final anti-Snph antibody concentration is 1 mg/ml in PBS buffer with 2% sucrose. For longer periods of storage, store at 20°C. Avoid repeat freeze-thaw cycles.
Precautions	Snph antibody - N-terminal region is for research use only and not for use in diagnostic or therapeutic procedures.

Protein Information

Images



WB Suggested Anti-Snph Antibody Titration: 1.0 µg/ml
Positive Control: Mouse Thymus