

Snap29 Antibody - middle region

Rabbit Polyclonal Antibody

Catalog # AI14413

Product Information

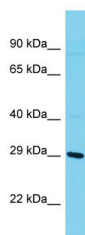
Application	WB
Primary Accession	Q9JI56
Other Accession	NM_053810 , NP_446262
Reactivity	Human, Mouse, Rat, Rabbit, Zebrafish
Predicted	Human, Mouse, Rat, Rabbit, Zebrafish
Host	Rabbit
Clonality	Polyclonal
Calculated MW	28 kDa

Additional Information

Alias Symbol	Gs32
Format	Liquid. Purified antibody supplied in 1x PBS buffer with 0.09% (w/v) sodium azide and 2% sucrose.
Reconstitution & Storage	Add 50 ul of distilled water. Final anti-Snap29 antibody concentration is 1 mg/ml in PBS buffer with 2% sucrose. For longer periods of storage, store at 20°C. Avoid repeat freeze-thaw cycles.
Precautions	Snap29 Antibody - middle region is for research use only and not for use in diagnostic or therapeutic procedures.

Protein Information

Images



Host: Rabbit
Target Name: Snap29
Sample Tissue: Rat Testis lysates
Antibody Dilution: 1.0µg/ml