

# Snap29 antibody - middle region

Rabbit Polyclonal Antibody

Catalog # AI14414

## Product Information

Application	WB
Primary Accession	<a href="#">Q9Z2P6</a>
Other Accession	<a href="#">NM_053810</a> , <a href="#">NP_446262</a>
Reactivity	Human, Mouse, Rat, Rabbit, Dog, Guinea Pig, Horse
Predicted	Human, Rat, Dog, Guinea Pig
Host	Rabbit
Clonality	Polyclonal
Calculated MW	29071

## Additional Information

Alias Symbol	Gs32, MGC105273
Other Names	Synaptosomal-associated protein 29, SNAP-29, Golgi SNARE of 32 kDa, Gs32, Soluble 29 kDa NSF attachment protein, Vesicle-membrane fusion protein SNAP-29, Snap29
Format	Liquid. Purified antibody supplied in 1x PBS buffer with 0.09% (w/v) sodium azide and 2% sucrose.
Reconstitution & Storage	Add 50 ul of distilled water. Final anti-Snap29 antibody concentration is 1 mg/ml in PBS buffer with 2% sucrose. For longer periods of storage, store at 20°C. Avoid repeat freeze-thaw cycles.
Precautions	Snap29 antibody - middle region is for research use only and not for use in diagnostic or therapeutic procedures.

## Protein Information

Name	Snap29 {ECO:0000250 UniProtKB:O95721}
Function	SNAREs, soluble N-ethylmaleimide-sensitive factor-attachment protein receptors, are essential proteins for fusion of cellular membranes. SNAREs localized on opposing membranes assemble to form a trans-SNARE complex, an extended, parallel four alpha-helical bundle that drives membrane fusion. SNAP29 is a SNARE involved in autophagy through the direct control of autophagosome membrane fusion with the lysosome membrane. Also plays a role in ciliogenesis by regulating membrane fusions.
Cellular Location	Cytoplasm. Golgi apparatus membrane; Peripheral membrane protein. Cytoplasmic vesicle, autophagosome membrane {ECO:0000250 UniProtKB:O95721}; Peripheral membrane protein. Cell

projection, cilium membrane {ECO:0000250|UniProtKB:O95721}; Peripheral membrane protein. Note=Appears to be mostly membrane-bound, probably via interaction with syntaxins, but a significant portion is cytoplasmic Localizes to the ciliary pocket from where the cilium protrudes {ECO:0000250|UniProtKB:O95721}

#### Tissue Location

Widely expressed..

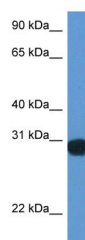
## References

---

Wong S.H.,et al.Mol. Biol. Cell 10:119-134(1999).  
Lubec G.,et al.Submitted (APR-2007) to UniProtKB.

## Images

---



WB Suggested Anti-Snap29 Antibody Titration: 1.0 µg/ml  
Positive Control: Rat Lung

Please note: All products are 'FOR RESEARCH USE ONLY. NOT FOR USE IN DIAGNOSTIC OR THERAPEUTIC PROCEDURES'.