

SSTR1 antibody - C-terminal region

Rabbit Polyclonal Antibody

Catalog # AI14420

Product Information

Application	WB, IHC
Primary Accession	P28646
Other Accession	NM_001049 , NP_001040
Reactivity	Human, Mouse, Rat, Rabbit, Zebrafish, Goat, Dog, Guinea Pig, Horse, Bovine, Sheep
Predicted Host	Mouse, Zebrafish, Pig, Chicken, Goat, Dog, Guinea Pig, Horse, Bovine
Clonality	Rabbit
Calculated MW	Polyclonal 42746

Additional Information

Gene ID	25033
Alias Symbol	SRIF-2
Other Names	Somatostatin receptor type 1, SS-1-R, SS1-R, SS1R, SRIF-2, Sstr1
Format	Liquid. Purified antibody supplied in 1x PBS buffer with 0.09% (w/v) sodium azide and 2% sucrose.
Reconstitution & Storage	Add 50 ul of distilled water. Final anti-SSTR1 antibody concentration is 1 mg/ml in PBS buffer with 2% sucrose. For longer periods of storage, store at 20°C. Avoid repeat freeze-thaw cycles.
Precautions	SSTR1 antibody - C-terminal region is for research use only and not for use in diagnostic or therapeutic procedures.

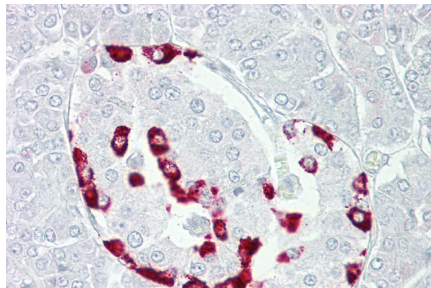
Protein Information

Name	Sstr1
Function	Receptor for somatostatin with higher affinity for somatostatin-14 than -28. This receptor is coupled to phosphotyrosine phosphatase and Na(+)/H(+) exchanger via pertussis toxin insensitive G proteins.
Cellular Location	Cell membrane; Multi-pass membrane protein.
Tissue Location	Brain, pituitary, islet, jejunum, stomach, heart, spleen

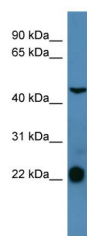
References

Meyerhof W.,et al.DNA Cell Biol. 10:689-694(1991).
Li X.-J.,et al.J. Biol. Chem. 267:21307-21312(1992).

Images



Immunohistochemistry with Pancreas tissue at an antibody concentration of 5µg/ml using anti-SSTR1 antibody (AI14420)



WB Suggested Anti-SSTR1 Antibody Titration: 0.2-1 µg/ml
ELISA Titer: 1:1562500
Positive Control: THP-1 cell lysate

Please note: All products are 'FOR RESEARCH USE ONLY. NOT FOR USE IN DIAGNOSTIC OR THERAPEUTIC PROCEDURES'.