

PLEKHG2 antibody - middle region

Rabbit Polyclonal Antibody

Catalog # AI14431

Product Information

Application	WB
Primary Accession	Q9H7P9
Other Accession	NM_022835 , NP_073746
Reactivity	Human, Mouse, Rat, Rabbit, Zebrafish, Pig, Dog, Guinea Pig, Bovine
Predicted	Human, Mouse, Rat, Rabbit, Zebrafish, Pig, Dog, Guinea Pig, Bovine
Host	Rabbit
Clonality	Polyclonal
Calculated MW	147969

Additional Information

Gene ID	64857
Alias Symbol Other Names	CLG, DKFZp667J2325, FLJ00018, FLJ22458, FLJ38638, ARHGEF42 Pleckstrin homology domain-containing family G member 2, PH domain-containing family G member 2, PLEKHG2
Format	Liquid. Purified antibody supplied in 1x PBS buffer with 0.09% (w/v) sodium azide and 2% sucrose.
Reconstitution & Storage	Add 50 ul of distilled water. Final anti-PLEKHG2 antibody concentration is 1 mg/ml in PBS buffer with 2% sucrose. For longer periods of storage, store at 20°C. Avoid repeat freeze-thaw cycles.
Precautions	PLEKHG2 antibody - middle region is for research use only and not for use in diagnostic or therapeutic procedures.

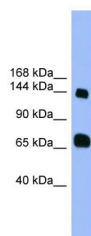
Protein Information

Name	PLEKHG2
Function	May be a transforming oncogene with exchange activity for CDC42 (By similarity). May be a guanine-nucleotide exchange factor (GEF) for RAC1 and CDC42. Activated by the binding to subunits beta and gamma of the heterotrimeric guanine nucleotide-binding protein (G protein) (PubMed: 18045877). Involved in the regulation of actin polymerization (PubMed: 26573021).

References

Ota T.,et al.Nat. Genet. 36:40-45(2004).
Grimwood J.,et al.Nature 428:529-535(2004).
Mural R.J.,et al.Submitted (JUL-2005) to the EMBL/GenBank/DDBJ databases.
Ueda H.,et al.J. Biol. Chem. 283:1946-1953(2008).
Dephoure N.,et al.Proc. Natl. Acad. Sci. U.S.A. 105:10762-10767(2008).

Images



WB Suggested Anti-PLEKHG2 Antibody Titration: 1.0 µg/ml
Positive Control: Fetal Heart

Please note: All products are 'FOR RESEARCH USE ONLY. NOT FOR USE IN DIAGNOSTIC OR THERAPEUTIC PROCEDURES'.