

# Rac2 antibody - C-terminal region

Rabbit Polyclonal Antibody

Catalog # AI14432

## Product Information

Application	WB
Primary Accession	<a href="#">Q05144</a>
Other Accession	<a href="#">NM_009008</a> , <a href="#">NP_033034</a>
Reactivity	Human, Mouse, Rat, Rabbit, Dog, Guinea Pig, Horse, Bovine
Predicted	Human, Mouse, Rat, Chicken, Guinea Pig, Bovine
Host	Rabbit
Clonality	Polyclonal
Calculated MW	21441

## Additional Information

Gene ID	19354
Alias Symbol	AI323801, AI452260
Other Names	Ras-related C3 botulinum toxin substrate 2, Protein EN-7, p21-Rac2, Rac2
Format	Liquid. Purified antibody supplied in 1x PBS buffer with 0.09% (w/v) sodium azide and 2% sucrose.
Reconstitution & Storage	Add 50 ul of distilled water. Final anti-Rac2 antibody concentration is 1 mg/ml in PBS buffer with 2% sucrose. For longer periods of storage, store at 20°C. Avoid repeat freeze-thaw cycles.
Precautions	Rac2 antibody - C-terminal region is for research use only and not for use in diagnostic or therapeutic procedures.

## Protein Information

Name	Rac2 {ECO:0000312   MGI:MGI:97846}
Function	Plasma membrane-associated small GTPase which cycles between an active GTP-bound and inactive GDP-bound state. In its active state, binds to a variety of effector proteins to regulate cellular responses, such as secretory processes, phagocytosis of apoptotic cells and epithelial cell polarization. Regulatory subunit of the phagocyte NADPH oxidase complex that mediates the transfer of electrons from cytosolic NADPH to O <sub>2</sub> to produce the superoxide anion (O <sub>2</sub> <sup>-</sup> ).
Cellular Location	Cytoplasm. Membrane; Lipid-anchor. Note=Membrane-associated when activated

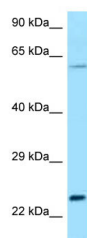
## References

---

Shirsat N.V.,et al.Oncogene 5:769-772(1990).  
Carninci P.,et al.Science 309:1559-1563(2005).

## Images

---



WB Suggested Anti-Rac2 Antibody Titration: 1.0 µg/ml  
Positive Control: Mouse Heart

Please note: All products are 'FOR RESEARCH USE ONLY. NOT FOR USE IN DIAGNOSTIC OR THERAPEUTIC PROCEDURES'.