

STARD8 antibody - N-terminal region

Rabbit Polyclonal Antibody

Catalog # AI14435

Product Information

Application	WB
Primary Accession	Q92502
Other Accession	NM_001142503 , NP_001135975
Reactivity	Human, Dog
Predicted	Dog
Host	Rabbit
Clonality	Polyclonal
Calculated MW	112601

Additional Information

Gene ID	9754
Alias Symbol Other Names	DKFZp686H1668, DLC3, KIAA0189, STARTGAP3, ARHGAP38 StAR-related lipid transfer protein 8, Deleted in liver cancer 3 protein, DLC-3, START domain-containing protein 8, StARD8, START-GAP3, STARD8, DLC3, KIAA0189
Format	Liquid. Purified antibody supplied in 1x PBS buffer with 0.09% (w/v) sodium azide and 2% sucrose.
Reconstitution & Storage	Add 50 ul of distilled water. Final anti-STARD8 antibody concentration is 1 mg/ml in PBS buffer with 2% sucrose. For longer periods of storage, store at 20°C. Avoid repeat freeze-thaw cycles.
Precautions	STARD8 antibody - N-terminal region is for research use only and not for use in diagnostic or therapeutic procedures.

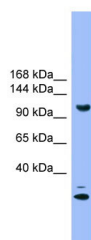
Protein Information

Name	STARD8
Synonyms	DLC3, KIAA0189
Function	Accelerates GTPase activity of RHOA and CDC42, but not RAC1. Stimulates the hydrolysis of phosphatidylinositol 4,5-bisphosphate by PLCD1.
Cellular Location	Cell junction, focal adhesion
Tissue Location	Widely expressed with highest levels in kidney, lung and placenta.

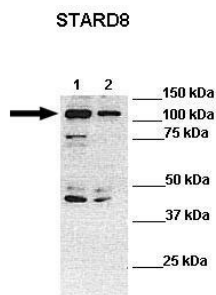
References

Nagase T.,et al.DNA Res. 3:17-24(1996).
Ota T.,et al.Nat. Genet. 36:40-45(2004).
Bechtel S.,et al.BMC Genomics 8:399-399(2007).
Ross M.T.,et al.Nature 434:325-337(2005).
Mural R.J.,et al.Submitted (SEP-2005) to the EMBL/GenBank/DBJ databases.

Images



WB Suggested Anti-STARD8 Antibody Titration: 1.0 µg/ml
Positive Control: 293T Whole Cell



Lanes: Lane 1: 30ug human HLE lysate Lane 2: 30ug human PLC/PRF-5 lysate
Primary Antibody Dilution: 1:1000
Secondary Antibody: Anti-rabbit-HRP Anti-rabbit-HRP
Secondary Antibody Dilution: 1:10,000
Gene Name: STARD8
Submitted by: Dr Frankie Ko Chi Fat, Lo-Kong Chan, Irene O.L. Ng, Judy Wai Ping Yam; Department of Pathology, The University of Hong Kong

See Immunoblot 2 Data and Customer Feedback for more information

Please note: All products are 'FOR RESEARCH USE ONLY. NOT FOR USE IN DIAGNOSTIC OR THERAPEUTIC PROCEDURES'.