

Rassf5 Antibody - C-terminal region

Rabbit Polyclonal Antibody

Catalog # AI14436

Product Information

Application	WB
Primary Accession	Q5EBH1
Other Accession	NM_018750 , NP_061220
Reactivity	Human, Mouse, Rat, Rabbit, Pig, Dog, Guinea Pig, Horse, Bovine
Predicted	Human, Mouse, Rat, Rabbit, Pig, Dog, Guinea Pig, Horse, Bovine
Host	Rabbit
Clonality	Polyclonal
Calculated MW	46714

Additional Information

Gene ID	54354
Alias Symbol Other Names	1300019G20Rik, AU042887, Maxp1, Nore1, Nore1A, Nore1B, Rapl Ras association domain-containing protein 5, New ras effector 1, Regulator for cell adhesion and polarization enriched in lymphoid tissues, RAPL, Rassf5, Nore1, Rapl
Format	Liquid. Purified antibody supplied in 1x PBS buffer with 0.09% (w/v) sodium azide and 2% sucrose.
Reconstitution & Storage	Add 50 ul of distilled water. Final anti-Rassf5 antibody concentration is 1 mg/ml in PBS buffer with 2% sucrose. For longer periods of storage, store at 20°C. Avoid repeat freeze-thaw cycles.
Precautions	Rassf5 Antibody - C-terminal region is for research use only and not for use in diagnostic or therapeutic procedures.

Protein Information

Name	Rassf5
Synonyms	Nore1, Rapl
Function	Potential tumor suppressor. Seems to be involved in lymphocyte adhesion by linking RAP1A activation upon T-cell receptor or chemokine stimulation to integrin activation. Isoform 2 stimulates lymphocyte polarization and the patch-like distribution of ITGAL/LFA-1, resulting in an enhanced adhesion to ICAM1. Together with RAP1A may participate in regulation of microtubule growth. The association of isoform 2 with activated RAP1A is required for directional movement of endothelial cells during wound healing (By

similarity). May be involved in regulation of Ras apoptotic function. The RASSF5-STK4/MST1 complex may mediate HRAS and KRAS induced apoptosis.

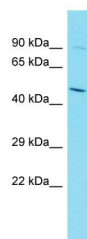
Cellular Location

Cytoplasm. Cytoplasm, cytoskeleton. Note=Isoform 2 is mainly located in the perinuclear region of unstimulated primary T-cells. Upon stimulation translocates to the leading edge and colocalizes with ITGAL/LFA-1 in the peripheral zone of the immunological synapse. Isoform 2 is localized to growing microtubules in vascular endothelial cells and is dissociated from microtubules by activated RAP1A (By similarity).

References

Vavvas D.,et al.J. Biol. Chem. 273:5439-5442(1998).
Katagiri K.,et al.Nat. Immunol. 4:741-748(2003).
Okazaki N.,et al.DNA Res. 11:127-135(2004).
Carninci P.,et al.Science 309:1559-1563(2005).
Khokhlatchev A.,et al.Curr. Biol. 12:253-265(2002).

Images



Host: Rabbit
Target Name: Rassf5
Sample Tissue: Mouse Spleen lysates
Antibody Dilution: 1.0µg/ml

Please note: All products are 'FOR RESEARCH USE ONLY. NOT FOR USE IN DIAGNOSTIC OR THERAPEUTIC PROCEDURES'.