

ARR3 antibody - C-terminal region

Rabbit Polyclonal Antibody

Catalog # AI14454

Product Information

Application	WB
Primary Accession	P36575
Other Accession	NM_004312 , NP_004303
Reactivity	Human
Predicted	Human
Host	Rabbit
Clonality	Polyclonal
Calculated MW	42778

Additional Information

Gene ID	407
Alias Symbol	ARRX
Other Names	Arrestin-C, Cone arrestin, C-arrestin, cArr, Retinal cone arrestin-3, X-arrestin, ARR3, ARRX, CAR
Format	Liquid. Purified antibody supplied in 1x PBS buffer with 0.09% (w/v) sodium azide and 2% sucrose.
Reconstitution & Storage	Add 50 ul of distilled water. Final anti-ARR3 antibody concentration is 1 mg/ml in PBS buffer with 2% sucrose. For longer periods of storage, store at 20°C. Avoid repeat freeze-thaw cycles.
Precautions	ARR3 antibody - C-terminal region is for research use only and not for use in diagnostic or therapeutic procedures.

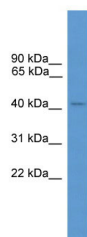
Protein Information

Name	ARR3
Synonyms	ARRX, CAR
Function	May play a role in an as yet undefined retina-specific signal transduction. Could bind to photoactivated-phosphorylated red/green opsins.
Cellular Location	Photoreceptor inner segment {ECO:0000250 UniProtKB:Q9EQP6}. Cell projection, cilium, photoreceptor outer segment {ECO:0000250 UniProtKB:Q9EQP6}
Tissue Location	Inner and outer segments, and the inner plexiform regions of the retina

References

Murakami A.,et al.FEBS Lett. 334:203-209(1993).
Craft C.M.,et al.J. Biol. Chem. 269:4613-4619(1994).
Craft C.M.,et al.Submitted (NOV-1998) to the EMBL/GenBank/DDBJ databases.
Sakuma H.,et al.FEBS Lett. 382:105-110(1996).
Sakuma H.,et al.Gene 224:87-95(1998).

Images



WB Suggested Anti-ARR3 Antibody Titration: 1.0 µg/ml
Positive Control: Fetal Lung

Please note: All products are 'FOR RESEARCH USE ONLY. NOT FOR USE IN DIAGNOSTIC OR THERAPEUTIC PROCEDURES'.