

# ADAM8 antibody - N-terminal region

Rabbit Polyclonal Antibody

Catalog # AI14479

## Product Information

---

<b>Application</b>	WB
<b>Primary Accession</b>	<a href="#">P78325</a>
<b>Other Accession</b>	<a href="#">NM_001109</a> , <a href="#">NP_001100</a>
<b>Reactivity</b>	Human, Mouse, Rat, Rabbit
<b>Predicted</b>	Human, Mouse
<b>Host</b>	Rabbit
<b>Clonality</b>	Polyclonal
<b>Calculated MW</b>	88771

## Additional Information

---

<b>Gene ID</b>	101
<b>Alias Symbol</b>	CD156, MGC134985, MS2
<b>Other Names</b>	Disintegrin and metalloproteinase domain-containing protein 8, ADAM 8, 3.4.24.-, Cell surface antigen MS2, CD156a, ADAM8, MS2
<b>Format</b>	Liquid. Purified antibody supplied in 1x PBS buffer with 0.09% (w/v) sodium azide and 2% sucrose.
<b>Reconstitution &amp; Storage</b>	Add 50 ul of distilled water. Final anti-ADAM8 antibody concentration is 1 mg/ml in PBS buffer with 2% sucrose. For longer periods of storage, store at 20°C. Avoid repeat freeze-thaw cycles.
<b>Precautions</b>	ADAM8 antibody - N-terminal region is for research use only and not for use in diagnostic or therapeutic procedures.

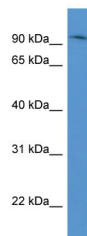
## Protein Information

---

<b>Name</b>	ADAM8
<b>Synonyms</b>	MS2
<b>Function</b>	Possible involvement in extravasation of leukocytes.
<b>Cellular Location</b>	Membrane; Single-pass type I membrane protein.
<b>Tissue Location</b>	Expressed on neutrophils and monocytes.

## Images

---



WB Suggested Anti-ADAM8 Antibody Titration: 0.2-1  
µg/ml  
ELISA Titer: 1:62500  
Positive Control: PANC1 cell lysate

Please note: All products are 'FOR RESEARCH USE ONLY. NOT FOR USE IN DIAGNOSTIC OR THERAPEUTIC PROCEDURES'.