

Adra2c Antibody - middle region

Rabbit Polyclonal Antibody

Catalog # AI14481

Product Information

Application	WB
Primary Accession	Q01337
Other Accession	NM_007418 , NP_031444
Reactivity	Human, Mouse, Rat, Pig, Dog, Guinea Pig
Predicted	Human, Mouse, Rat, Pig, Dog, Guinea Pig
Host	Rabbit
Clonality	Polyclonal
Calculated MW	49906

Additional Information

Gene ID	11553
Alias Symbol	Adra-2c, [a]2C, alpha2-C4, alpha2C
Other Names	Alpha-2C adrenergic receptor, Alpha-2 adrenergic receptor subtype C4, Alpha-2C adrenoreceptor, Alpha-2C adrenoceptor, Alpha-2CAR, Adra2c
Format	Liquid. Purified antibody supplied in 1x PBS buffer with 0.09% (w/v) sodium azide and 2% sucrose.
Reconstitution & Storage	Add 50 ul of distilled water. Final anti-Adra2c antibody concentration is 1 mg/ml in PBS buffer with 2% sucrose. For longer periods of storage, store at 20°C. Avoid repeat freeze-thaw cycles.
Precautions	Adra2c Antibody - middle region is for research use only and not for use in diagnostic or therapeutic procedures.

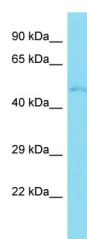
Protein Information

Name	Adra2c
Function	Alpha-2 adrenergic receptors mediate the catecholamine- induced inhibition of adenylate cyclase through the action of G proteins.
Cellular Location	Cell membrane; Multi-pass membrane protein.

References

Link R.E.,et al.Mol. Pharmacol. 42:16-27(1992).

Images



Host: Rabbit
Target Name: Adra2c
Sample Tissue: Mouse Brain lysates
Antibody Dilution: 1.0µg/ml

Please note: All products are 'FOR RESEARCH USE ONLY. NOT FOR USE IN DIAGNOSTIC OR THERAPEUTIC PROCEDURES'.